



ISSN 2715-6915

Proceedings

The 1st International Conference on
Business, Accounting, Supply Chain,
and Logistics

November 21-22, 2019.
Surakarta, Indonesia

Organized by : _____
Accounting Study Program _____



Co Host



Supported by :





ISSN 2715-6915

Proceedings

The 1st International Conference on
Business, Accounting, Supply Chain,
and Logistics

November 21-22, 2019.
Surakarta, Indonesia

Organized by : _____
Accounting Study Program



Co Host



Supported by :



BOARD OF EDITOR

Editor in Chief

Agung Nur Probohudono, Ph.D. Universitas Sebelas Maret, Indonesia

Managing Editors

Dr. Arum Kusumaningdyah Adiaty Universitas Sebelas Maret, Indonesia

Dr. Wahyu Widarjo, S.E., M.Si. Universitas Sebelas Maret, Indonesia

Ari Kuncoro Widagdo, Ph.D. Universitas Sebelas Maret, Indonesia

Editorial Board Members

Dr. Dody Hapsoro STIE YKPN, Indonesia

Dr. Suryanto, S.E., M.Si. Universitas Sebelas Maret, Indonesia

Bhimo Rizky Samudro, Ph.D. Universitas Sebelas Maret, Indonesia

Y. Anni Aryani, Ph.D. Universitas Sebelas Maret, Indonesia

Dr. Umi Muawannah Universitas Gajayana, Indonesia

Yussri Sawani, Ph.D. Universiti Teknologi Mara (UITM), Malaysia

Dr. Setianingtyas Honggowati Universitas Sebelas Maret, Indonesia

Dr. Jaka Winarna Universitas Sebelas Maret, Indonesia

Dr. Muthmainah Universitas Sebelas Maret, Indonesia

Dr. Siti Aisyah Tri Rahayu Universitas Sebelas Maret, Indonesia

Prof. Dr. Dyah Sawitri Universitas Gajayana, Indonesia

Dr. Sri Wahyu Agustini Universitas Veteran Bangun Nusantara,
Indonesia

Prof. Drs. Hasan Fauzi Universitas Sebelas Maret, Indonesia

Editorial Board Assistants

An Nurrahmawati, S.E., M.Sc. Universitas Sebelas Maret, Indonesia

Dian Perwitasari, S.Ak., M.Si. Universitas Sebelas Maret, Indonesia

Estetika Mutiaranisa Kurniawati, S.E., M.Acc. Universitas Sebelas Maret, Indonesia

PREFERENCE

Thanks to God, with the almighty grace.

We are really grateful that the 1st International Conference on Business, Accounting, Supply Chain, and Logistics being held successfully on November 21-22, 2019 by Accounting Study Program, Faculty of Economics and Business, Universitas Sebelas Maret at the Harris Hotel, Surakarta.

We have to render our greatest appreciation to all parties who have helped organized and carried out this event with the best quality, comfort, and precision. To our participants, please accept our warmest greetings, since it is our great pleasure and honor to have all of you to participate in the conference. We are delighted to have all of the distinguished scientists and researchers for contributing their research and encouraging us all to learn more with the presentation and discussion session.

We also would like to extend an especially warm welcome to our distinguished speakers; Prof. Hooy Chee Wooi from Universiti Sains Malaysia, Prof Ruhul Salim from Curtin University, Prof. Corina Joseph from Universiti Teknologi Mara Malaysia, Prof. Juliana Sutanto from Lancaster University and Prof. Habib Mahama from Qatar University, who have travelled far to share their knowledge in this conference. We feel thankful for their willingness in taking the time to contribute and share their expertise and experience to this conference that have enriched our knowledge in this field.

The International Conference on Business, Accounting, Supply Chain, and Logistics with the theme "The New Paradigm of Link and Match between Government, University, and Industry" has an important meaning because it is in line with the development of the business world that needs to be studied. As we know, the logistics network and payment system are supporting components that have a very vital role in increasing the penetration of Indonesia's e-commerce market which is currently booming. The complexity of the distribution problem makes logistics a theme that still needs to be studied both practically and academically. The study from both perspectives is expected to help the government in developing a better economic world.

This proceeding contains a collection of abstracts containing the essence of the researchers' thoughts which are expected to contribute to the scientific field. The topic of this conference is Accounting, Supply Chain and Logistic, and all the subtext of those three main topics. These topics are manifested in the presented papers by the scholarly work from all of the researchers from the education, practice, and government field.

We have 238 papers that will be presented in this academic event with 2 best papers. Participants came from various universities throughout Indonesia and covered a variety of topics related to the main theme of this event. We sincerely hope that these proceedings and the conference, in particular, will grant benefits to all of the participants and also the readers. Especially as a reference for further economics and business development in Indonesia and all over the world. We welcome and will receive any suggestions and constructive feedback to improve the organizing strategy for the betterment and development of our conference.

Surakarta, 21 November 2019

The ICBASL Committee

CONTENT

1	STIMULUS EFFECT ELEMENTS PREDICTOR RESPONSE BY NEURAL SYSTEM OF HUMAN DIMENSIONS SENSE, FEEL, THINK AND ACT ON CUSTOMER LOYALTY (SURVEY OF FAST-FOOD RESTAURANT CUSTOMERS IN BANDUNG) Mohamad Ramdan	1
2	CONTRIBUTION OF CORPORATE SOCIAL RESPONSIBILITY (CSR) IN STRENGTHENING OF SMALL MEDIUM ENTREPRISES (SMEs) IN EAST JAVA Achmad Murdiono, Suryo Hadi Wira Prabowo, Andro Agil N.R., Afwan Hariri	2
3	BUSINESS DEVELOPMENT STRATEGY USING BUSINESS MODEL CANVAS APPROACH: A CASE STUDY IN THE RAJA ABON MAKMUR LESTARI, PANGKALPINANG CITY, INDONESIA Yulia, Evahelda, Novyandra Ilham Bahtera, Laila Hayati, Novyandri Taufik Bahtera	3
4	THE FOOD SECURITY LEVEL OF FARMER HOUSEHOLD'S AT IRRIGATION AND NON IRRIGATION LANDS IN JUWANGI DISCTRIC OF BOYOLALI REGENCY Archadius Permata Pakerti, Akhmad Daerobi, Evi Gravitani	4
5	AN ANALYSIS ON FACTORS AFFECTING STATE-OWNED ENTERPRISE'S GO PUBLIC CONSTRUCTION STOCK PRICE IN PT. INDONESIA STOCK EXCHANGE (IDX) 2010-2017 Teguh Setiawan Pinem, Riwi Sumantyo, Evi Gravitiani	5
6	ANALYSIS OF ACCOUNTING SYSTEM FORMULATION FOR SMEs BASED ON SAK EMKM Suparti, Sunaryanto, Bety Nur Achadiyah, Dudung Ma'ruf Nuris	6
7	THE IMPLEMENTATION OF COMPUTER-AIDED AUDIT TECHNIQUES USING AUTOCAD (CASE STUDY: CONSTRUCTION PROJECTS SUPERVISED BY THE FINANCIAL AND DEVELOPMENT SUPERVISORY BOARD/ BADAN PENGAWASAN KEUANGAN DAN PEMBANGUNAN) Ade Robbani Setiawan, Bentrastyadi, Evi Gravitiani	7
8	HAYAMI'S APPROACH TO VALUE CHAIN CASHEW MAPPING IN WONOGIRI REGENCY, CENTRAL JAVA Dini Nur Utamawati, Endang Siti Rahayu, Kusnandar	8
9	SUSTAINABLE DEVELOPMENT GOALS IMPLEMENTATION: YOUTH ECOPRENEURSHIP INTENTION IN WASTE PLASTICS MANAGEMENT INTO VALUABLE PRODUCTS IN BORDER AREAS Aloysius Hari Kristianto, Prammatya Resindra Widya	9
10	FACTORS THAT AFFECT THE TECHNICAL EFFICIENCY OF WHITE PEPPER IN BANGKA BELITUNG Yulia, Novyandra Ilham Bahtera	10
11	INTENTION DIFFERENCES ANALYSIS ON USED CELLPHONE HANDLING COLLABORATION IN SECOND HAND MARKET ACTORS AT YOGYAKARTA, INDONESIA Siti Mahsanah Budijati, I Nyoman Pujawan	11

12	THE ROLE OF ACCOUNTING INFORMATION SYSTEMS IN HALAL FOOD SUPPLY CHAIN	12
	Ahmad Baehaqi, Alex Afit Ardiansyah, Donny Setiawan	
13	AUDIT QUALITY ATTRIBUTES AND CLIENT FACTORS	13
	Muhamad Taqi, Rahmawati, Bandi, Sri Murni, Warsina	
14	EFFECTIVE GOOD UNIVERSITY GOVERNANCE: GOVERNANCE IMPROVING THE QUALITY OF HIGHER EDUCATION INSTITUTION TO REALIZE THE WORLD CLASS INSTITUTION (EMPIRICAL STUDY ON ACCREDITED A PRIVATE UNIVERSITY IN HIGHER EDUCATION SERVICE INSTITUTIONS REGION III 2019)	14
	Ignatius Edward Riantono, Lusianah, Kevin Deniswara, Archie Nathanael Mulyawan	
15	THE EFFECT OF SERVICE PERFORMANCE AND CONSUMER SATISFACTION, ON BEHAVIOR INTENTION IN FAST FOOD RESTAURANTS IN THE CITY OF SURAKARTA	15
	Bambang Nur Cahyaningrum, Salman Faris Insani, Yugi Pratiwi	
16	THE EFFECT OF RELIGIOSITY AND EDUCATION ON THE BUSINESS ETHICS OF THE ACCOUNTING PROFESSION IN AUDIT DECISION MAKING	16
	Dian Fitria Handayani, Ade Elsa Betavia	
17	THE EFFECT OF COMPENSATION SCHEMES AND MORAL REASONING ON BUDGETARY SLACK	17
	Nayang Helmayunita, Ade Elsa Betavia	
18	ASSESSMENT OF PROPOSED CONTAINER LOADING ALGORITHM FOR FORWARD AND REVERSE LOGISTICS OF ONE DOOR CONTAINER UPON LARGE DATA	18
	Paulina Kus Ariningsih, Titi Iswari, Kevin Djoeneady Poetera, Y. M. Kinley Aritonang	
19	A STUDY OF FINANCIAL REPORTING SYSTEM IN ROKEL COMMERCIAL BANK	19
	Alimamy Kamara, Sallieu Koroma, Niniet I. Arvitrida	
20	THE CORRELATION BETWEEN LEVEL OF FINANCIAL LITERACY OF SAVINGS AND LOAN COOPERATIVE MEMBERS TO THE PROFITABILITY OF SAVINGS AND LOAN COOPERATIVES IN SUKABUMI CITY	20
	Vayolla Naurah Shyfa, Elan Eriswanto	
21	DETERMINANTS OF POVERTY ON SUMATERA DYNAMIC PANEL DATA ANALYSIS	21
	Heffi Christya Rahayu, J.J. Sarungu, Lukman Hakim, AM. Soesilo	
22	THE ROLE OF PRODUCER ORGANISATIONS IN LINKING SMALLHOLDER VEGETABLE FARMERS TO MODERN RETAIL MARKETS: EVIDENCE FROM INDONESIA	22
	Fanny Widadie	
23	THE GIFT: MANA CONCEPT IN CSR MINING CORPORATE	23
	Sanju Waladata, Prihandoko Sanjatmiko	

24	WHETHER YES OR NOT THE AIR POLLUTION BE OVERCOME IN INDONESIA?	24
	Desy Kurniawati	
25	INCREASING TAXPAYER COMPLIANCE THROUGH THE IMPLEMENTATION OF AN E-FILLING SYSTEM THAT IS MODERATED BY INTERNET UNDERSTANDING	25
	Moch. Aminnudin, Ali, Subadriyah	
26	DOES CARBON EMISSION DISCLOSURE MEDIATE THE EFFECT OF ECO CONTROL ON ENVIRONMENTAL PERFORMANCE? EVIDENCE OF INDONESIAN MANUFACTURING COMPANIES	26
	Dody Hapsoro, Crescentiano Agung Wicaksono	
27	STRATEGIES AND BUSINESS MODELS FOR SHARING ECONOMY: DIGITAL CREATIVITY	27
	Yuni Rimawati, Atik Emilia Sula	
28	THE EFFECT OF CORPORATE GOVERNANCE MECHANISM AND SOCIAL RESPONSIBILITY ON VALUE OF THE FIRM: EVIDENCES FROM PROPERTY COMPANIES IN INDONESIA	28
	I Gede Adiputra, Cynthia Emmanuela Irawan	
29	THE ROLE OF HUMAN CAPITAL BETWEEN FOREIGN DIRECT INVESTMENT AND ECONOMIC GROWTH IN INDONESIA	29
	Islahul Amri	
30	RELATIONSHIP OF CIGARETTE COMPANIES, MIDDLEMEN AND TOBACCO FARMERS: CORE-PERIPHERY ANALYSIS	30
	Andri Prasetyo, Bhimo Rizky Samudro, Albertus Magnus Soesilo	
31	THE ROLE OF SHARIAH MICRO FINANCIAL INSTITUTION TO REDUCE POVERTY	31
	Eni Setyowati, Siti Aisyah Tri Rahayu	
32	THE EFFECT OF ORGANIZATIONAL JUSTICE ON THE PERFORMANCE OF GOJEK DRIVERS MEDIATED BY JOB SATISFACTION IN YOGYAKARTA	32
	Endah Mayasari, Purbudi Wahyuni, Haddy Suprpto	
33	IMPROVEMENT OF REGIONAL TOURISM COMPETITIVENESS USING BUSINESS AND TECHNOLOGY STRATEGY DEVELOPMENT: STUDY CASE IN TOURISM VILLAGE WITH INDEPENDENT CATEGORY, SLEMAN REGENCY, INDONESIA	33
	Utaminingsih Linarti, Latif Khoirul Umam	
34	INFLUENCE OF ACCOUNTING UNDERSTANDING, TAXATION REGULATIONS, AND USE OF TECHNOLOGY INFORMATION ON TAX COMPLIANCE	34
	Nilam Kesuma, Aspahani, Arfianna Novera	
35	OPERATIONAL BUDGETTING DESIGN SYSTEM WEB BASE IN SPRING BED COMPANY	35
	Sirajuddin Omsa, Muh. Iskandar Sabang, Muhammad Jayadi	

36	THE PRODUCTION AND TECHNICAL EFFICIENCY LEVEL OF RED CHILI PEPPER IN CENTRAL BANGKA	36
	Rati Purwasih, Novyandra Ilham Bahtera, Yulia	
37	REFLECTION THE CONCEPT OF GOING CONCERN AT A VENTURE SALT COMMUNITY	37
	Adi Darmawan Ervanto, Habi Bullah	
38	PROFIT DISTRIBUTION MANAGEMENT AND ISLAMIC BANKS' MARKET POWER IN INDONESIA	38
	Tastaftiyan Risfandy	
39	SHARIA GOVERNANCE AND SUSTAINABILITY REPORT DISCLOSURE: THE MEDIATING ROLE OF FINANCIAL PERFORMANCE	39
	Salamah Wahyuni, Falikhatun, Afifah Oki Nilasakti, Milananda Ainun Niswah	
40	THE ROLE OF LEADERSHIP STYLE IN MEDIATING EMOTIONAL INTELLIGENCE ON EMPLOYEE JOB SATISFACTION IN THE CENTRAL STATISTICS AGENCY OF SOUTHEAST SULAWESI PROVINCE	40
	Nurwati, Rostin, Husin	
41	OWNERSHIP STRUCTURE, CORPORATE GOVERNANCE, AND CAPITAL STRUCTURE : THE IMPLICATION ON FINANCIAL PERFORMANCE EVIDENCE OF CONSUMER GOODS COMPANIES LISTED IN INDONESIAN STOCK EXCHANGE	41
	Yolandafitri Zulvia, Vanica Serly, Dicky Guspinaldi	
42	THE EFFECT OF PROFITABILITY ON FIRM VALUE WITH FIRM SIZE AS MODERATING VARIABLE IN FOOD AND BEVERAGE SUB SECTOR COMPANY LISTED ON INDONESIA STOCK EXCHANGE PERIOD 2014-2018	42
	Yerisma Welly, Arfan Ikhsan	
43	LIQUIDITY AND REALIZATION OF GAINS AND LOSSES ON AVAILABLE-FOR-SALE SECURITIES: INDONESIAN EVIDENCE	43
	Retno Yulianti, Ari Kuncara Widagdo, Doddy Setiawan, Bambang Sutopo	
44	THE EFFECT OF TRADE VOLUME AND INTEREST RATE ON VOLATILITY OF STOCK PRICE	44
	Ni Nyoman Dian Sudewi, Ni Putu Ayu Darmayanti	
45	GREEN INVESTMENT: COMPETITIVE ADVANTAGE TO SUSTAINABILITY	45
	Fia Dialysa	
46	SUSTAINABLE ENTREPRENEURSHIP: CONCEPT FOR SUSTAINABLE BUSINESS (CASE STUDY ON WARUNG KOPI KIWARI)	46
	Mohamad Hadi Prasetyo	

47	QUALITY CONTROL OF KNITTED PRODUCTION USING STATISTICAL PROCESS CONTROL METHODS IN BANDUNG CONVECTION HOME INDUSTRY Resi Juariah Susanto	47
48	THE ANALYSIS OF THE EFFECTS OF INDUSTRIAL GROWTH OF INDONESIA CRUDE PALM OIL TOWARD THE MACROECONOMIC AND MANUFACTURING INDUSTRY IN INDONESIA FROM THE YEAR 1997 TO 2015 Rosalendro Eddy Nugroho	48
49	CEO CHARACTERISTICS AND FIRM PERFORMANCE: A MEDIATING EFFECT OF CAPITAL STRUCTURE Heri Susanto, Imam Ghozali, Dian Perwitasari, Sururi	49
50	THE ROLE OF GOVERNMENT OWNERSHIP ON EARNINGS QUALITY: EVIDENCE ACROSS GOVERNMENT AND PRIVATE BANKS IN INDONESIA Atik Isnawati, Rahmawati, Ari Kuncara Widagdo, Agung Nur Probohudono	50
51	DOES TAX AMNESTY AND TAX AUTHORITIES AFFECT TAXPAYER COMPLIANCE? Retno Ika Sundari, Anis Chariri	51
52	RE-EXAMINE EFFECT OF THE BOARD'S CHARACTERISTICS ON THE FIRM VALUE (EMPIRICAL STUDY ON NON-FINANCIAL COMPANIES IN THE INDONESIA STOCK EXCHANGE) Edy Supriyono, Nurmadi Harsa Sumarta, Pandji Anoraga, Aprih Santoso	52
53	HOW CORPORATE GOVERNANCE MODERATING THE EFFECT OF THE PRESIDENT DIRECTOR CHARACTERISTICS TO THE ENVIRONMENTAL DISCLOSURE (EMPIRICAL STUDY ON BANK COMPANIES IN THE INDONESIA STOCK EXCHANGE) Nurmadi Harsa Sumarta, Edy Supriyono	53
54	THE EFFECT OF OWNERSHIP STRUCTURE AND CORPORATE GOVERNANCE OF FIRM PERFORMANCE (EMPIRICAL STUDY OF INFRASTRUCTURE, UTILITIES, AND TRANSPORTATION SECTOR COMPANIES LISTED ON THE INDONESIA STOCK EXCHANGE IN 2015-2018) Lisa Zakia Tsuroya, Sri Murni, Ari Kuncoro Widagdo, Agus Budiarmanto	54
55	THE ROLE OF CORPORATE SOCIAL RESPONSIBILITY (CSR) IN THE PERSPECTIVE OF ISLAMIC BUSINESS ETHICS Lili Wardani Harahap	55
56	TAX AGGRESSIVENESS IN FAMILY COMPANIES: THE INDONESIAN EXPERIENCE Nurul Herawati, Rahmawati, Bandi, Doddy Setiawan	56
57	THE EFFECT OF SERVICE QUALITY, EXPERIENCE AND RELIGIOUS COMMITMENTS ON SHARIA BANK CUSTOMERS: THE ROLE OF CUSTOMER SATISFACTION MEDIATION Muhammad Cholil, Muthmainah	57

58	A STRATEGY TO FACE UP TERRIBLE OFFENSIVE ONLINE-TAXI ATTACK ON LOCAL OFFLINE SALOON-CAR TAXI-FLEET COMPANIES IN DIY (STUDY ON LOCAL OFFLINE TAXI COMPANIES IN DIY)	58
	Karyono, Ign.Agus Suryono, Michael Alfonsus Liquori Suryo Sutrisno	
59	THE EFFECTS OF TOURNAMENT HORIZON AND THE FREQUENCY OF RELATIVE INFORMATION PUBLICATION ON PERFORMANCE	59
	Muhammad Syam Kusufi, Frida Fanani Rohma, Erfan Muhammad	
60	THE LINK BETWEEN INTERNAL CONTROL AND MORAL REASONING ON ACCOUNTING FRAUD TENDENCY: AN EXPERIMENTAL STUDY ON ACCOUNTING STUDENTS	60
	Umi Mahmudah, Muhammad Syam Kusufi, Frida Fanani Rohma	
61	INFRASTRUCTURE AND THE PERFORMANCE OF LOCAL GOVERNMENT ADMINISTRATION	61
	Jaka Winarna, Dody Setyawan, Payamta	
62	PERSUING ECONOMIC GROWTH IN INDONESIA: AN ANTECEDENTS AND ITS CONCEQUENCES	62
	I Gede Fery Andhika, Ni Putu Santi Suryantini	
63	MILLENNIALS' PURCHASE INTENTION OF DIGITAL WALLET	63
	Terra Saptina Maulani	
64	CORPORATE SOCIAL RESPONSIBILITY AS A MODERATOR IN THE EFFECT OF SELF EFFICACY TO ENTREPRENEURIAL MOTIVATION	64
	Yuni Siswanti, Ahmad Muhsin, Djono Nurhadi	
65	THE EFFECT COMPETENCE OF VILLAGE FUND MANAGERS, ROLE OF VILLAGE OFFICIALS AND ORGANIZATIONAL COMMITMENT TO ACCOUNTABILITY OF VILLAGE FUND MANAGEMENT	65
	Puji Nurjanah, Sumaryanto	
66	ANALYSIS OF FACTORS THAT INFLUENCE TURNOVER INTENTION OF COOPERATIVE EMPLOYEES IN KUPANG CITY	66
	Tarsisius Timuneno, Petrus E. de Rosari, Apriana H.J. Fanggidae	
67	TYPE TRUCK AND SHIPMENT CHOICE IN CROSS-BORDER FREIGHT TRANSPORTATION USE MICRODATA	67
	Said Basalim	
68	THE EFFECT OF CORPORATE SOCIAL RESPONSIBILITY (CSR) DISCLOSURE ON FINANCIAL PERFORMANCE ON MANUFACTURING COMPANIES LISTED ON THE INDONESIA STOCK EXCHANGE 2015-2017	68
	Indra Setiawan, Nurmadi Harsa Sumarta	
69	ANALYSIS COMPARATIVE OF FINANCIAL PERFORMANCE AND INVESTOR REACTION IN WINNER COMPANIES INDONESIAN SUSTAINABILITY REPORTING AWARDS (ISRA) IN THE YEAR 2016-2018	69
	Ahmad Nur Aziz, Fatchan Ahyani, Erma Setiawati	
70	STRUCTURAL EMPOWERMENT AND PSYCHOLOGICAL EMPOWERMENT WITH NORMATIVE INTERACTION BASED ON ALTRUISTIC VALUES TO IMPROVE MANAGERIAL EFFECTIVENESS	70
	Panca Tuah Tuha, Badia Perizade, Taufiq Marwa, Agustina Hanafi	

71	EFFECT OF PROFITABILITY ON DIVIDEND POLICY WITH LIQUIDITY AS MODERATING VARIABLE IN PHARMACEUTICAL SUB-SECTOR COMPANIES LISTED ON INDONESIA STOCK EXCHANGE	71
	Nurlaila, Nur Ahmadi Bi Rahmani, Nurwani, Nur Fadhilah Ahmad Hasibuan	
72	FAIR VALUE PLAN, PROPERTY AND EQUIPMENT ARE RELIABLE? CONCEPTUAL FRAMEWORK ANALYSIS	72
	Sudarto, Rahmawati	
73	POLITICAL CONNECTION AND REINVESTMENT PREFERENCES: A STUDY ON LOCAL FIRMS IN TIMOR LESTE	73
	Moises M. Braganca, Supramono, Harijono, Apriani D. R. Atahau	
74	THE EFFECT OF RELATED TRANSACTIONS INDICATED TUNNELING TOWARDS THE PROFITABILITY OF INDONESIAN STATE-OWNED BANK	74
	Siti Arifah, Agung Nur Probohudono	
75	DEVELOPMENT OF SELF-CONCEPT, ORGANIZATIONAL AWARENESS, ON RESONANT LEADERSHIP OF WORK ENGAGEMENT	75
	Maulan Aklil, Badia Perizade, Bambang Bemby Soebyakto, Agustina Hanafi	
76	CREDIT ACCESS AND WELL-BEING: EVIDENCE FROM INDONESIA	76
	Siti Aisyah Tri Rahayu, Mulyanto, Johadi, Muhammad Yusuf Indra Purnama	
77	CORPORATE GOVERNANCE MECHANISMS FOR CORPORATE SOCIAL RESPONSIBILITY DISCLOSURE IN MINING COMPANIES	77
	Indah Novita Sari, Nurmadi Harsa Sumarta	
78	IS PERFORMANCE ART ORGANIZATION ENHANCE THE ASSOCIATION BETWEEN BUDGET TARGET FLEXIBILITY AND BUDGET PERFORMANCE?	78
	Dian Indudewi, Rahmawati, Agung Nur Probohudono, Muthmainah	
79	THE EFFECT OF INCOME SMOOTHING ON LOAN LOSS PROVISIONS WITH AUDIT QUALITY AS A MODERATING VARIABLE: INDONESIA EVIDENCE	79
	Ari Kuncara Widagdo, Oryza Sativa Heningtyas, Siti Rochmah Ika	
80	THE DETERMINANTS OF INVESTMENT RANKINGS OF FAMILY COMPANIES IN INDONESIA	80
	Yusef Widya Karsana, Rahmawati, Djuminah, Agung Nur Probohudono	
81	THE EFFECT OF EMOTIONAL INTELLIGENCE, INTELLECTUAL INTELLIGENCE, SELF-CONTROL, AND MOTIVATION STUDENT OF ACCOUNTING CLASS TO LEARN THE LEVEL UNDERSTANDING ACCOUNTING INTRODUCTION TO ACCOUNTING 1 AND 2	81
	Maidiana Astuti Handayani, Dewi Sukmasari, Betri	
82	FINANCIAL PLANNING OF WAQF FOR MUSLIM PROFESSIONAL THROUGH ISLAMIC FINANCIAL INSTITUTIONS IN INDONESIA	82
	Sugianto, Nurlaila, Nur Fadhilah Ahmad Hasibuan	
83	THE IMPACT OF FOREIGN AID ON THE ECONOMIC GROWTH OF SIERRA LEONE	83
	Ibrahim Sorie Kamara, Siti Aisyah Tri Rahayu, Lukman Hakim	

84	FINANCIAL SECTOR PERFORMANCE: EVIDENCE IN TWELVE WEST AFRICAN COUNTRIES	84
	Ibrahim Sorie Kamara, Siti Aisyah Tri Rahayu, Lukman Hakim	
85	COMPARATIVE STUDY OF CHILI COMMODITY ON VALUE CHAIN ANALYSIS IN JEMBER AND BANYUWANGI REGENCY, EAST JAVA, INDONESIA	85
	Adhitya Wardhono, Yulia Indrawati, M. Abd. Nasir, Ciplis Gema Qori'ah	
86	DOES SENTIMENT AFFECT MARKET PERFORMANCE?	86
	Dian Safitri P. Koesoemasari, Tulus Haryono, Doddy Setiawan	
87	FACTORS THAT INFLUENCE THE DISCLOSURE OF RESEARCH AND DEVELOPMENT IN THE COMPANY	87
	Agung Nur Probohudono, Widodo Muktiyo, Khresna Bayu Sangka, Nurmadi Harsa Sumarta	
88	GOVERNANCE AND LOCAL WISDOM: SOLUTION FOR INTER-REGIONAL CONFLICT IN INDONESIA	88
	Agung Nur Probohudono, Agung Wibowo, Muhammad Muqoffa, Waskito Widi Wardoyo	
89	DEVELOPMENT OF LOCAL WISDOM REVITALIZATION MODEL IN ESTABLISHING THE GOVERNANCE OF WATER RESOURCE AND ENVIRONMENT IN THE MIDDLE OF INTER-REGIONAL CONFLICTS (A CASE STUDY IN THE SLOPE OF MOUNT LAWU IN KARANGANYAR REGENCY, CENTRAL JAVA PROVINCE, AND MAGETAN REGENCY, EAST JAVA PROVINCE	89
	Agung Nur Probohudono, Agung Wibowo, Muhammad Muqoffa, Waskito Widi Wardoyo	
90	THE EFFECT OF FIREHOSE OF FALSEHOOD (FOF) ON INVESTMENT DECISION: AN EXPERIMENTAL STUDY	90
	Y Anni Aryani, Agung Nur Probohudono, Doddy Setiawan, Wahyu Widarjo, Isna Putri Rahmawati	
91	THE EFFECTS OF POLITICALLY CONNECTED, CEO GENDER, COMPLEXITY, FIRM SIZE AND STATUS OF AUDIT FIRM ON AUDIT FEES	91
	Erma Wulan Sari, Rina Trisnawati, Triyono	
92	TAX E-FILING AND TAX COMPLIANCE RESEARCHES IN TEN YEARS: A BIBLIOGRAPHY STUDY APPROACH	92
	Diana Airawaty, Wahyu Widarjo, Adhisyahfitri Evalina Ikhsan	
93	PERCEPTION OF AUDITORS ON FRAUD DETECTION FROM KOHLBERG'S PERSPECTIVE ON MORAL DEVELOPMENT	93
	Alexander Anggono	
94	DEVELOPING MULTIPLE CRITERIA SUPPLIER EVALUATION IN SMALL AND MEDIUM ENTERPRISES	94
	Yeni Sumantri	
95	ANALYSIS OF THE EFFECT OF GOOD CORPORATE GOVERNANCE ON THE VALUE OF PUBLICLY TRADED BANKING COMPANIES	95
	Hari Kusuma Satria Negara, Dian Indri Purnamasari	
96	SUSTAINABILITY OFFICER IN INDONESIAN LISTED STATE-OWNED ENTERPRISES: THE EMERGING TREND	96
	Elvia Ivada	

97	THE EFFECT OF PERSONAL COST ON WHISTLEBLOWING INTENTION WITH LEGAL PROTECTION AS INTERVENING VARIABLE	97
	Praja Habib Pasangka, Zaki Fakhroni, Indra Suyoto Kurniawan	
98	OWNERSHIP CONCENTRATION AND AUDIT QUALITY IN INDONESIA FINANCIAL INSTITUTIONALS	98
	Hanung Triatmoko, Sri Suranta, Sri Murni, Ari Kuncara Widagdo, Rahmawati	
99	CORPORATE GOVERNANCE, FIRM CHARACTERISTICS, CORPORATE SOCIAL RESPONSIBILITY DISCLOSURE, AND FIRM VALUE IN THE PARTICIPANTS OF SUSTAINABILITY REPORT AWARD 2014	99
	Rahimah, Hermala Kusumadewi	
100	IMPLEMENTATION AND EVALUATION OF THE PROGRAM SANITATION CAMPAIGN (EVIDENCE IN SEMANGGI VILLAGE, SURAKARTA CITY)	100
	Fajar Budi Harsakti	
101	ADAPTIVE LEVEL OF FARMERS ON CLIMATE CHANGE	101
	Barokatuminalloh, Yunastiti Purwaningsih, Tri Mulyaningsih, Akhmad Daerobi	
102	ECONOMIC FEASIBILITY AND ADDED VALUE OF SALTED FISH PRODUCTS USING OVEN DRYER WITH RENEWABLE ENERGY IN TANJUNG BINGA, BELITUNG, INDONESIA	102
	Suryandaru, Dwi Wahyu Nugroho, Muthia Kamila, Rangga Abdi Nugraha, Garist Sekar Tanjung, Hasto Khairru Rahman, Irma Nur Ahmar, Burhanuddin, Iwan Irawan, Dedir Agus Setiawan	
103	THE DETERMINANT OF BALANCE OF PAYMENT IN SIX ASEAN COUNTRIES	103
	Rizal Syaifudin, Anita Widiastuti	
104	SUCCESSFUL CONCEPTUAL MODEL OF SAP ERP IMPLEMENTATION	104
	Tri Joko Wibowo	
105	THE GOVERNMENT INTERNAL CONTROL SYSTEM OF FRAUD PREVENTION IN DEVICE ORGANIZATIONS REGIONAL (OPD) EAST FLORES DISTRICT	105
	Anthon S. Y. Kerihi, Umami Faisyah	
106	EFFECT OF INTERNATIONALIZATION, INDUSTRIAL TYPE, AND COMPANY SIZE ON DISCLOSURE CORPORATE SOCIAL RESPONSIBILITY	106
	Frista	
107	PEER REVIEW ON THE FRAMEWORK PERSPECTIVES IN LOGISTICS AUDIT METHODS	107
	Yohanes Kristantio Wibowo, Eko Wahyu Widodo, Rida Indriyani	
108	MANDATORY DISCLOSURE REQUIREMENTS OF FINANCIAL ACCOUNTING STANDARDS FOR ENTITY WITHOUT PUBLIC ACCOUNTABILITY: THE CASE OF COOPERATIVES IN INDONESIA	108
	Sartono, Djoko Suhardjanto, Agung Nur Probohudono, Djuminah	
109	INSTITUTIONAL OF MARINE FISHERY'S PRODUCTION AND DISTRIBUTION IN KANGEAN ISLANDS	109
	Kurniyati Indahsari	

110	FACTORS AFFECTING PERCEIVE VALUE OF LUXURY ADVENTURE TOURISM PRODUCTS	110
	Agung Hari Sasongko, Zunan Setiawan, Abdullah Umar	
111	DISRUPTIVE INNOVATION VOLUNTARY DISCLOSURE INDEX	111
	Indrian Supheni, Agung Nur Probohudono	
112	VALIDITY TEST OF STOCK VALUATION WITH PRICE EARNINGS RATIO (PER) AND DIVIDEND DISCOUNT MODEL (DDM) AT GO PUBLIC COMPANIES IN INDONESIA (CASE STUDY OF COMPANIES REGISTERED IN THE KOMPAS 100 INDEX 2011-2017)	112
	Destavannya P.H.P, Heru Agustanto	
113	THE INFLUENCE OF CORPORATE GOVERNANCE STRUCTURES ON DISCLOSURE OF HEALTH AND SAFETY IN INDONESIA (EMPIRICAL STUDY OF NON-FINANCIAL BUMN COMPANIES PERIOD 2015-2017)	113
	Achmad Budiman Rosadi, Agung Nur Probohudono	
114	THE ISLAMIC ECONOMIC DEVELOPMENT IN INDONESIA TIME RANGE OF 2004 TO 2017	114
	Ahmad Farras Adibuddin, Doddy Setiawan	
115	DOES THE EFFICIENCY OF INTELLECTUAL CAPITAL HAVE AN INFLUENCE ON STOCK PRICE CRASH RISK?	115
	Adelia Dyaning Pratiwi, Agung Nur Probohudono	
116	CLIENT'S FIRM SIZE, AND AUDIT QUALITY	116
	Yety Anggraini, Adya Puspita A, Whilis Aziz Panji P	
117	THE INFLUENCE OF YOUTUBERS AND SELEBGRAMS'S TAX KNOWLEDGE ON TAX PAYMENT COMPLIANCE	117
	Dian Perwitasari, Patar Andreas, Rachma R.Mayangsari, T.Afifah SA, Tria Ayu P	
118	PERFORMANCE IMPROVEMENT OF SKIPJACK FISH SUPPLY CHAIN USING SUPPLY CHAIN OPERATION REFERENCE (SCOR)	118
	Afni Khadijah, Tauny Akbari, Wahyuda	
119	SHAPING STRATEGIC FOODS' PRICES: AN EVIDENCE FROM SOLORAYA	119
	Jalu Aji Prakoso, Risca Dwi Jayanti, Muhrom Ali Rozai, Khresna Bayu Sangka	
120	MANAGEMENT CONTROL SYSTEM OF BUMN MINISTRY OVER THE RADICALISM'S ISSUES	120
	Estetika Mutiaranisa, Alexandre Gazetta, Azza Mahandani Wardah, Made Anggi Dian Lestari, Mochamad Husni Wahdana, Vina Murtisari	
121	ANALYSIS OF FLOOD AND DROUGHT IMPACTS ON FOOD VULNERABILITY ON THE BENGAWAN SOLO WATERSHED	121
	Amelia Choya Tia Rosalia	
122	IMPACT OF TAX AMNESTY, MODERN ADMINISTRATION SYSTEM, THE TAXPAYER ATTITUDES, SUBJECTIVE NORMS AND CONTROL BEHAVIORAL CONTROL ON TAXPAYER COMPLIANCE	122
	Sri Risma Yenny, Aminah	
123	INFLUENCE OF TRANS-PACIFIC PARTNERSHIP VERSUS CHINESE GIANTS: ILLUSION OR REAL ECONOMIC MASTERY?	123
	Ana Shohibul MA, Agustinus Suryantoro	
124	MODERNIZATION: SHAPE AND IMPACT ON EXCLUSIVE BREASTFEEDING	124

	Anang Pra Yogi, Bhimo Rizky Samudro, Albertus Magnus Soesilo, Yogi Pasca Pratama	
125	THE ROLE OF WORK MOTIVATION IN MODERATING EFFECT WORK BEHAVIOR ON PERFORMANCE Anastasia Riani Suprapti	125
126	CORPORATE GOVERNANCE AND INTERNAL CONTROL INFORMATION DISCLOSURE Anisa Istiqomah Isnaini, Dita Andraeny	126
127	THE RELATIONSHIP BETWEEN SYSTEMATIC RISK AND CAPITAL STRUCTURE WITH THE COMPANY'S EARNINGS RESPONSE COEFFICIENT WHEN INITIAL PUBLIC OFFERING ON THE IDX Annisa Berliana Paramithasari, Agung Nur Probohudono	127
128	THE IMPLEMENTATION OF SAK-ETAP IN PESANTREN AT LAMPUNG PROVINCE Any Eliza, Agus Kurniawan, Dinda Fali Rifan	128
129	THE EFFECT OF PERCEIVED BENEFIT, BRAND PRIDE, ATTITUDE TOWARD BRAND, AND PURCHASE BRAND INTENTION ON XIAOMI SMARTPHONE IN INDONESIA Asep Saepuloh, Hilman Rismanto, Deri Alan Kurnia, Hedi Cupiadi	129
130	ANALYSIS OF VULNERABILITY ASSESSMENT WEBSITE FOR BASIC EDUCATION DATA (DAPODIK) IN CITY X USING OPENVAS AND OWASP-ZAP A N Awlarijal, A Budiono, A Almaarif	130
131	VULNERABILITY ANALYSIS ON THE WEBSITE OF THE COMMUNICATIONS, INFORMATICS AND STATISTICS DEPARTMENT IN BANDUNG REGENCY A Fakhri, A Almaarif, A Budiono	131
132	STATISTICAL KEY FIGURE MIGRATION IN ACTIVITY-BASED COSTING MODULE FINANCE SAP HANA Aulia Nuri Ikhsanati, Muhardi Saputra, Warih Puspitasari	132
133	ANALYSIS OF OROS MODELER DATA REPORTING PROCESS TO SAP HANA IN ACTIVITY BASED COSTING FOR INDONESIA TELECOMMUNICATION INDUSTRY Dennis Nigel Cunong, Muhardi Saputra, Warih Puspitasari	133
134	FINANCIAL LITERACY, FINTECH, FINANCIAL INCLUSION, AND THE EFFECT OF PERFORMANCE AND SUSTAINABILITY OF THE MICRO, SMALL, AND MEDIUM ENTERPRISE (MSMES) IN SOLORAYA Devi Narulitasari, Yulvan Arif Nurohman, Melia Kusuma	134
135	GENDER EFFECT ON SUCCESSION IN FAMILY FIRM IN INDONESIA An Nurrahmawati, Alan Himawan, Desy Margaret Teacher, Dewi Saraswati Adya Pramudita, Dinar Pramuarti, Muhammad Alvin Febrian Ogawa, Nadya Hanifah	135
136	ANALYSIS OF THE EXTERNALITY OF THE FLOATING NET CAGES IN LAKE MANINJAU Dewi Zaini Putri, Idris, Ali Anis, Melti Roza Adry, Yollit Permata Sari, Israyeni	136

137	TREND OF ECONOMIC AND SOCIAL INDICATORS POST REGIONAL AUTONOMY AND FISCAL DECENTRALIZATION POLICIES IN REGION OF CENTRAL JAVA PERIOD OF 2014-2019 Kikin Windhani, Fajar Hardoyono, Herman Sambodo	137
138	THE EFFECT OF CORPORATE GOVERNANCE MECHANISM ON EARNING MANAGEMENT AND ITS IMPACT ON FIRM VALUE (EMPIRICAL STUDY OF MANUFACTURING COMPANIES LISTED ON THE INDONESIA STOCK EXCHANGE FOR THE PERIOD 2015-2017) Dwi Cahyani, Noer Sasongko, Rina Trisnawati, Nur Siyami	138
139	CONSTRUCTION OF ISLAMIC CUSTOMER CAPITAL VALUES WITH THE "GUSJIGANG" APPROACH (GOOD, RECITE, AND TRADE) ON THE HOLY INDUSTRY Dwi Soegiarto, Rahmawati, Djuminah, Falikhatun	139
140	THE EFFECT OF INFLATION AND OPEN UNEMPLOYMENT ON INDONESIA'S ECONOMIC GROWTH FROM 2005 TO 2018 Elsi Harefa br Ginting, Selvita Eka Eviana Purba	140
141	HOW THE CREDIBILITY OF SOURCES CAN REDUCE SKEPTICISM AND INCREASE THE POSITIVE EVALUATION TOWARD THE ORGANIC RICE Eni Andari, Salamah Wahyuni, Budhi Haryanto, Wisnu Untoro	141
142	SHARIA PRINCIPLES ON BUSINESS PROCESS MODELLING: HOW TRANSPORTATION PROVIDER SEIZES CHANCE IN INDONESIA HALAL INDUSTRY? Fajar Surya Ari Anggara, Wisnu Wijaya	142
143	RESOLVING DISPUTED TAX ISSUES: THE INFLUENCE OF PARTNER NEGOTIATION OBJECTIVES AND COMMUNICATION STYLE ON NEGOTIATION PROCESS AND OUTCOME Fauzan Misra, Rahmat Kurniawan	143
144	ANALYSIS OF THE EFFECTS OF MACROECONOMIC AND MONETARY VARIABLES ON FOREIGN DIRECT INVESTMENT IN INDONESIA Hari Setia Putra, Farid Husein	144
145	ISLAMIC CORPORATE GOVERNANCE AND PERFORMANCE BASED ON MAQASID SHARIA INDEX- STUDY IN INDONESIA Hasan Mukhibad, Mahameru Rosy Rochmatullah, Warsina	145
146	AN ASSESSMENT OF THE IMPACT OF MICRO FINANCE IN IMPROVING THE STANDARD OF LIVING OF MARKET WOMEN IN FREETOWN- SIERRA LEONE Hassan Andrew Fornah, Abdul Rahman Njai	146
147	RISK MANAGEMENT: PERSPECTIVE FROM SHARIA BANKING (COMPARISON OF SHARIA COMMERCIAL BANKS AND SHARIA BUSINESS UNITS) Ida Nihayah	147
148	THE ROLE OF THE LOGISTICS MARKETPLACE IN IMPROVING THE PERFORMANCE OF LOGISTICS PROVIDER SERVICES (LPS) MSMES IN INDONESIA Iman Nurakhmad Fajar Debora	148

149	DOES AUDIT COMMITTEE CHARACTERISTICS REDUCE AUDIT REPORTING DELAYS: EVIDENCE FROM INDONESIA STOCK EXCHANGE	149
	Istiqomah N, Yoga Pratama N, Levina Ulfa S and Wiwin Juliyanti	
150	ANALYSIS THE ABSORPTION OF REGIONAL EPENDITURE BUDGETS, INFLATION AND REGIONAL ECONOMIC GROWTH	150
	Juliati, Arum Kusumaningdyah Adiati, Trisninik Ratih Wulandari	
151	THE IMPORTANCE OF FINANCIAL PERFORMANCE FOR COMMUNITY WELFARE: STUDY ON THE LOCAL GOVERNMENT IN INDONESIA	151
	Khairudin, Rosmiati Tarmizi, Indrayenti	
152	THE EFFECT OF FISCAL NEEDS VARIABLES ON THE ALLOCATION OF DAU IN THE ISLANDING AREA	152
	Luthfia Maha Reni, Doddy Setiawan	
153	THE EFFECT OF CORPORATE SOCIAL RESPONSIBILITY DISCLOSURE ON THE PERFORMANCE OF BUMN USING EARNING MANAGEMENT AS A MODERATION FACTOR	153
	M. Afton Ilman Huda, Sri Murni, Ari Kuncoro W., Agus Budiarmanto	
154	ANTESEDENTS AND CONSEQUENCES OF DISFUNCTIONAL BEHAVIOR AND ITS IMPACT ON AUDIT QUALITY	154
	Mazda Eko Sri Tjahjono, Jesaya Pandia, Revi Pratiwi	
155	POLITIZATION OF LOCAL GOVERNMENT BUDGET ALLOCATIONS IN THE 2017 ELECTION	155
	Mega Wahyu Widawati, Ari Kuncara Widagdo	
156	THE PHENOMENON OF “DESA SILUMAN”: A STATE-BUDGET-SUCKER THAT GHOSTING INDONESIA	156
	Nur Chayati, Arry Dwi Wahyu Rahmasari, Galuh Syarifah Mentari Dahana, Lintang Dwi Purnami, Muhamad Iqbal Febriansyah and Olyvia Elsaday Panjaitan	
157	DESIGNING FINANCIAL LITERACY MODEL USING THE “BIG TREE FINANCIAL LITERACY” INSTRUMENT FOR ECONOMIC EDUCATION STUDENTS IN SEBELAS MARET UNIVERSITY	157
	Dewi Kusuma Wardani, Muhammad Sabandi, Feri Setyowibowo	
158	INCREASED FINANCIAL LITERACY: STUDY OF PRE-SERVICE TEACHER'S BELIEF IN ECONOMICS FOR CONDUCTING FINANCIAL EDUCATION LEARNING	158
	Muhammad Sabandi, Dewi Kusuma Wardani, Feri Setyowibowo, Jonet Ariyanto, Mintasih Indriayu	
159	RISK-PREFERENCES AND POVERTY NEXUS: EVIDENCE FROM INDONESIA	159
	Muhammad Yusuf Indra Purnama, Ariyanto Adhi Nugroho	
160	ENVIRONMENTAL AND SOCIAL PERFORMANCE OF INDONESIAN STATE-OWNED COMPANIES USING GRI STANDARD-BASED ISOCEP INDEX	160
	Nadhirah Nagu, Hasan Fauzi, Agung Nur Probohudono, Payamta	
161	MANAGERIAL OWNERSHIP AND PROPENSITY OF TAX AVOIDANCE	161
	Nanik Niandari, Rachmawaty Hanny Y., Evi Grediani	

162	THE ROLE OF COMPETITIVE ADVANTAGE IN MEDIATING THE INFLUENCE OF PROMOTIONAL STRATEGY ON MARKETING PERFORMANCE (A STUDY ON THE TENUN IKAT INDUSTRY IN BALI)	162
	Ni Nyoman Kerti Yasa, Ica Rika Candraningrat, I G. A. Ketut Giantari, Putu Laksmi Dewa Rahmayanti	
163	DOES INVESTMENT INFLUENCE MINING'S CORPORATE SOCIAL RESPONSIBILITY?	163
	Nur Rizki Wijaya, Agung Nur Probohudono	
164	DPR ANALYSIS FOR PROFITABLE INVESTMENT: BASED ON PACKING ORDER THEORY	164
	Nurchayono, Ida Kristiana, Alwiyah	
165	THE IMPACT OF ILLEGAL FISHING VESSEL POLICY ON STOCK PRICE OF FISHERIES INDUSTRIES IN INDONESIA	165
	Paulina Inggita Prabawati	
166	WEBSITE SECURITY ANALYSIS OF DEPARTMENT COMMUNICATION, INFORMATICS AND STATISTICS USING KALI LINUX	166
	Poltak Andreas Marbun, Avon Budiono, Ahmad Almaarif	
167	FACTORS INFLUENCING INDONESIAN PROPENSITY TO EVADE TAX: AN EXPERIMENT	167
	Ponty SP Hutama, Rahmawati, Payamta, Djuminah	
168	ACCOUNTABILITY OF LOCALITY IN BEEF CATLE SHARING: LESSON LEARNED FROM MADURA AND JAVA	168
	Prasetyono, Yuliana Rakhmawati, Ach Fawaid As'ad	
169	IMPLEMENTATION OF LAMIKRO APPLICATION FOR SMES IN INDONESIA TO DEAL WITH THE INDUSTRIAL REVOLUTION 4.0	169
	Saktiana Rizki Endiramurti, Agung Dwi Mahendra, Atika Kusuma Dewi, Dina Rahmana, Inez Novindriastuti, Fariz Hakim, Putri Arumsari Budidiningrat	
170	WHETHER THE AUDITOR'S REPUTATION AND COMPANY SIZE HAVE AN IMPACT ON AUDIT DELAY? (STUDY EMPIRICAL IN BANKING COMPANIES LISTED ON THE INDONESIA STOCK EXCHANGE FROM 2016-2018)	170
	Putri Intan Prastiwi, Meita Fahrani	
171	SEVERAL FACTORS TO GENERATE BUSINESS PERFORMANCE OF MOSLEM FOOD ENTERPRENEUR (GOFOOD) IN SURAKARTA AND YOGYAKARTA	171
	Septi Kurnia Prastiwi, Asep Maulana Rohimat, Putu Widhi Iswari	
172	THE EFFECT OF SELF-EFFICACY PERCEPTION TOWARDS THE INTENTION OF USE: EMPIRICAL STUDY IN LINKEDIN STUDENT USERS	172
	Rakyan Widhowati Tanjung, Sri Suryaningsum	
173	FACTORS THAT INFLUENCE THE INTENTION OF USE ON THE SYSTEM OF MATHEMATICS-BASED ACCOUNTING METHODS	173
	Rakyan Widhowati Tanjung, Sony Warsono	

174	THE ROLE OF REAL EARNINGS MANAGEMENT AND IFRS ADOPTION IN THE VALUE RELEVANCE OF EARNINGS AND BOOK VALUE OF EQUITY	174
175	IS LOGISTICS AUDIT NEEDED? Risca Dwi Jayanti, Ida Nihayah, Sergius F Bon	175
176	DETERMINANTS OF CABON DIOXIDE EMISSIONS: CASE STUDY FROM SIX THE WORLD'S LARGEST CARBON EMITTERS COUNTRIES Salma Audiena Al Faizah, Julianus Jhonny Sarungu, Izza Mafruhah	176
177	THE EFFECTS OF TAX AVOIDANCE ON THE TIMELINESS OF ANNOUNCEMENT OF FINANCIAL STATEMENTS ON MANUFACTURING COMPANIES LISTED ON THE INDONESIA STOCK EXCHANGE IN 2014 - 2018 Septilia Sekar M, Frista	177
178	THE RELATIONSHIP BETWEEN RURAL ECONOMY, TOURISM SECTOR AND POVERTY: STUDY IN KOTA BATU-EAST JAVA INDONESIA Setyo Tri Wahyudi	178
179	ECONOMIC EXTERNALITY OF THE IMPACT OF DEVELOPMENT HYPERMART AND APARTMENTS IN KOTA MALANG Setyo Tri Wahyudi	179
180	THE EFFECT OF TREASURER CHARACTERISTICS ON ORGANIZATIONS AND WORK UNITS OF REGIONAL APPARATUSES ON TIMELINESS OF SUBMISSION OF APBD ACCOUNTABILITY REPORT IMPLEMENTATION (CASE STUDY OF THE SURAKARTA CITY GOVERNMENT IN 2018) Shinta Ramadhani, Hanung Triatmoko, Agung Nur Probohudono, Djuminah	180
181	THE EFFECT OF REGIONAL ORIGINAL INCOME, GENERAL ALLOCATION FUNDS, REMAINING BETTER CALCULATIONS, FIXED ASSETS, NUMBER OF POPULATION AND ECONOMIC GROWTH ON CAPITAL EXPENDITURE (STUDY OF PROVINCES OF PAPUA AND WEST PAPUA IN 2016-2018) Sifak Arifatus S, Hanung Triatmoko, Agung Nur Probohudono, Djuminah	181
182	THE EFFECT OF STOCK LIQUIDITY ON THE CORPORATE TAX AVOIDANCE: AN EMPIRICAL STUDY OF MANUFACTURING COMPANIES LISTED ON THE INDONESIA STOCK EXCHANGE (IDX) IN 2016-2018 Silvia Kartika. K, Frista	182
183	MOTIVES FOR FIXED ASSET REVALUATION WITH THE INFORMATION HYPOTHESIS: AN EXAMINATION OF INDONESIA DATA Sri Hastuti, Ari Kuncara Widagdo, Doddy Setiawan, Bambang Sutopo	183

184	REGIONAL EXPANSION AND THE LOCAL COMMUNITY WELFARE: A STUDY OF THE EFFECTIVENESS OF 20 YEARS OF IMPLEMENTATION OF AUTONOMY IN INDONESIA Aminah, Sri Risma Yenny	184
185	UTILIZATION OF ECONOMIC DISASTER RISK LOSS DATA MAPPING AND HOW COLLABORATIVE GOVERNANCE PROVIDES ASSISTANCE FOR POST-EARTHQUAKE ECONOMIC LOSSES? Sri Wahananing Dyah, Eko Prasajo	185
186	ANALYSIS OF DEVELOPMENT INEQUALITY AND HEALTH SPENDING ALLOCATION TO HUMAN HEALTH DEVELOPMENT INDICATOR IN BANTEN PROVINCE Sugeng Setyadi, Deris Desmawan	186
187	THE IMPACT OF SAFETY CLIMATE, SOCIAL CAPITAL ON ORGANIZATIONAL CITIZENSHIP BEHAVIOUR IN WATER BODY MANAGEMENT UNIT OFFICER IN JAKARTA Suryani Maryam	187
188	THE IMPROVEMENT OF VILLAGE FUND PROGRAM GOVERNANCE THROUGH TRAINING AND COACHING TO IMPROVED HUMAN RESOURCE SKILL Susilaningtyas Budiana Kurniawati, Hasan Fauzi	188
189	GOOD CORPORATE GOVERNANCE, DISCLOSURES CORPORATE SOCIAL RESPONSIBILITY AND THE VALUE OF THE COMPANY Siti Nurlaela, Susilaningtyas Budiana Kurniawati, Rahmawati	189
190	THE EFFECT OF PRIMARY STAKEHOLDERS ON MANDATORY DISCLOSURE COMPLIANCE IN THE LOCAL GOVERNMENT'S FINANCIAL STATEMENTS (EMPIRICAL STUDY OF LOCAL GOVERNMENT IN JAVA) Tadjuddin, Djoko Suhardjanto	190
191	THE ANALYSIS OF PREDICTIVE CAPABILITY OF CORPORATE GOVERNANCE, CONSERVATISM, FIRM SIZE, AND FINANCIAL RATIOS ON THE FINANCIAL PERFORMANCE OF INDONESIAN NON-FINANCIAL COMPANIES Daniel Tulasi, Theodorus Radja Ludji	191
192	BUILDING SUPPLY CHAIN COLLABORATION: THE ROLE OF ICT AND TRUST Titik Kusmantini, Agung Satmoko, Arum Kurniawati	192
193	ANTECEDENTS OF GREEN CONSUMPTION ATTITUDES AND CONSEQUENCES FOR INTENTIONS AND BUYING BEHAVIOR OF NON-PESTICIDE VEGETABLE AND FRUIT PRODUCTS Titik Kusmantini, Heru Tri Sutiono, Rini Dwi Astuti, Trestina Ekawati	193
194	EFFECT OF TAX PLANNING, DEFERRED TAX ASSET, DEFERRED TAX EXPENSE, FIRM SIZE ON EARNINGS MANAGEMENT Umi Kalsum, Rika Henda Safitri, Harun Delamat	194

195	UNIVERSITY HUMAN CAPITAL PLANNING "LECTURER" TOWARDS SUPERIOR UNIVERSITY	195
	Uus Mohammad Darul Fadli, Maruf Akbar, Hamidah	
196	ANALYSIS OF ASSESSMENT CYCLE MIGRATION DATA IN ACTIVITY BASED COSTING USING SAP HANA	196
	Vindha Novriani Tanjung, Muhardi Saputra, Warih Puspitasari	
197	YOUTH STOCK MARKET PARTICIPATION: DOES FINANCIAL LITERACY MATTER?	197
	Vitria Susanti, Nadya Maharani	
198	THE EFFECT OF SUPPLY CHAIN MANAGEMENT ON COMPANY PERFORMANCE THROUGH COMPETITIVE ADVANTAGE	198
	Hedi Cupiadi, Rohimat Nurhasan, Wufron	
199	THE PROFILE OF CREATIVE CRAFTS INDUSTRY MAPPING	199
	Rodhiah, Toto Mukmin, Nur Hidayah	
200	THE EFFECT OF DISCLOSURE ON SUSTAINABILITY REPORTS, FOREIGN BOARDS AND FOREIGN OWNERSHIP ON FIRM VALUE WITH INDONESIA SUSTAINABILITY REPORTING AWARDS (ISRA) AS A MODERATING VARIABLE	200
	Ismul Aksan, Jati Narendro Pratigno Tiyoso, Evi Gantowati	
201	LOGISTICS AND SUPPLY CHAINS STRUCTURE OF STRATEGIC FOODS COMMODITY IN SOLORAYA	201
	Khresna Bayu Sangka, Agung Nur Probodudono, RM Syah Arif Atmaja W, Rifky Pratama Putra	
202	THE EFFECT OF DISRUPTIVE INNOVATION AND E-COMMERCE BASED TRANSACTION IN THE ONLINE TAX COLLECTION POLICY	202
	Gen Norman Thomas, Engelwati Gani, Wendy Endrianto, Lely Indriaty	
203	THE IMPACT OF ORGANIZATION COMMITMENT, SALARY SATISFACTION, AND WORK SATISFACTION ON INTENTION TURNOVER PT. BERCA HARDAYAPERKASA	203
	Farida Elmi	
204	THE STRATEGY OF POTENCY AND VILLAGE FUNDS MANAGEMENT IN ENDE REGENCY, EAST NUSA TENGGARA PROVINCE	204
	Christien C Foenay, I Wayan Mudita, Ni Putu Nursiani	
205	THE EFFECT OF PERFORMANCE MANAGEMENT ON PERFORMANCE WITH EMPLOYEE ATTITUDES AS INTERVENING AT PT. TISSAN NUGRAHA GLOBALINDO	205
	Sinarwaty	
206	FINANCIAL STATEMENT FRAUD PERSPECTIVES ON PENTAGON THEORY (CASE : BUMN GARUDA)	206
	Kusumaningdiah Retno Setiorini, Payamta	
207	ANALYSIS OF STRATEGY IN THE DEVELOPMENT OF ISLAMIC SCHOOL TEACHERS COMPETENCY, TARUNA, AL-KAUTSAR KRASAAN PROBOLINGGO	207
	Dyah Sawitri, Akhmad Iskandar	

208	INTERNET FINANCIAL REPORTING ON STATE-OWNED COMPANIES IN INDONESIA Atik Setiawati, Indrian Supheni, Ambarwati	208
209	INTEGRATED ENTREPRENEURS IN MALANG ISLAMIC UNIVERSITY Farida Syakir, Nurul Humaidah, Affifudin	209
210	MEASUREMENT MODEL OF INTERNAL AUDIT'S PERFORMANCE AT UNIVERSITIES Dhyah Setyorini	210
211	TRANSFORMATIONAL LEADERSHIP MODERATES THE EFFECT OF EMOTIONAL EXHAUSTION AND ORGANIZATIONAL SUPPORT TO TURNOVER INTENTION Yuni Siswanti, Agus Haryadi, Krisnandini Wahyu Pratiwi	211
212	EARLY WARNING SIGNAL IN DETECTING FRAUD INDICATION OF FINANCIAL REPORTING Tarjo, Alexander Anggono	212
213	DETERMINING THE LOCATION OF TEMPORARY LANDFILLS WITH SIMULTANEOUS SET COVERING MODEL (CASE STUDY IN YOGYAKARTA CITY NGASEM-GADING SECTOR TPS) Siti Anugrah Padabela, Annie Purwani, Agustina Dewi Ningrum	213
214	THE EFFECT OF HUMAN RESOURCES AUDIT, RATE, HR TURNOVER ON THE EFFECTIVENESS OF HOSPITAL SERVICES IN SOUTH SUMATERA Aspahani, Asfeni Nurullah, Nilam Kesuma	214
215	ANALYSIS OF SUPPLIER / VENDOR ATTITUDES TOWARDS THE USE OF E-PROCUREMENT SYSTEMS USING THE TECHNOLOGY ACCEPTANCE MODEL Nurul Anastasya Talaba, Utaminingsih Linarti	215
216	THE INFLUENCE OF MANAGERIAL TALENT ON JOB ROTATION (CASE STUDY ON POST OFFICE MANAGER IN REGIONAL IV JAKARTA) Agung Surya Dwianto, Madhakomala, Hamidah	216
217	COMPARATIVE ANALYSIS OF GOOD CORPORATE GOVERNANCE TO THE CORPORATE VALUE ON STATE-OWN ENTERPRISES AND PRIVATE COMPANIES Ahmad Setiawan Nuraya, Muhammad Anshori	217
218	MORALITY AND UNDERSTANDING OF PROFIT-LOSS SHARING DEBTORS; A PERSPECTIVE SAHIBUL MAL IN KENDARI CITY Ambo Wonua Nusantara, Rahmat, Hasan Aedy, Gamsir, Supriady Rusli	218
219	THE EFFECT OF WORK PASSION, WORK ENGAGEMENT, AND JOB SATISFACTION ON TURNOVER INTENTION (EMPIRICAL STUDY: PT. BANK MANDIRI (PERSERO) TBK) Siti Mariam, Abdul Haeba Ramli	219
220	MEASUREMENT OF FINANCIAL DISTRESS USING THE ALTMAN Z-SCORE, SPRINGATE AND ZMIJEWSKI METHODS, WHICH IS THE MOST ACCURATE? (EMPIRICAL STUDY OF RETAIL COMPANIES SUB-SECTOR LISTED ON THE IDX) Rifzaldi, Nur Aeni, Riyanti	220

221	THE POTENTIAL ANALYSIS OF CASSAVA PRODUCTION IN THE FRAMEWORK OF FOOD SECURITY IN JEMBER REGENCY, EAST JAVA, INDONESIA	221
	Lilis Yuliati, M. Abd. Nasir, I Wayan Subagiarta	
222	ADDITIONAL INFLUENCE ON CAPITAL DEPOSITS ON THE PROFITABILITY PERFORMANCE OF BPR BAHTERAMAS IN SOUTHEAST SULAWESI PROVINCE	222
	Emy Syamsuria, Muntu Abdullah, Sulvariany Tamburaka	
223	EXPERIENTIAL MARKETING AND CUSTOMER RELATION MARKETING BASED ON THE EFFECT OF CUSTOMER VALUE IN REALIZING MSME CUSTOMER TRUST IN THE TOURISM ENVIRONMENT OF WEST JAVA	223
	Henny Utarsih, Yuyus Suryana, Sucherly, Diana Sari	
224	THE ARCH-GARCH ANALYSES OF MACRO AND MICRO ECONOMIC VARIABLES, THAT INFLUENCE SHARES VALUE IN INDONESIAN STOCK EXCHANGE (IDX)	224
	B. Yulianto Nugroho, John P. Kaunang, Ferdinand D, Saragih	
225	ASSESSING NATIONAL BANKING EFFICIENCY THROUGH THE IMPLEMENTATION OF CORPORATE GOVERNANCE	225
	Aliffianti Safiria Ayu Ditta ¹ , Djuminah	
226	STRATEGY FOR THE DEVELOPMENT OF SME MANAGEMENT, MANAGEMENT ACCOUNTING INFORMATION SYSTEMS, AND THE EFFECTIVENESS OF MANAGEMENT CONTROL AND ITS EFFECT ON RESPONSE TO TAX COMPLIANCE IN CREATIVE INDUSTRY SMES	226
	Hiras Pasaribu, Afni Sirait, Alp.Yuwidiantoro, Nur Suhascaryo, Ida Ayu Purnama	
227	IMPROVEMENT OF ORGANIZATIONAL CULTURE, SERVICE QUALITY AND USE OF INFORMATION TECHNOLOGY AND ITS IMPLICATIONS ON ACADEMIC PERFORMANCE IN STUDENTS OF ACCOUNTING STUDY PROGRAMS	227
	Hiras Pasaribu, Gita Astyka Rahmanda, Indah Kartika Sandh I, Siti Rokhimah	
228	AN ANALYSIS OF THE INTERNAL CONTROL DEPARTMENT ROLE IN ACHIEVING GOOD UNIVERSITY GOVERNANCE WITH THE LEADER COMMITMENT AS A MEDIATING VARIABLE IN STATE ISLAMIC UNIVERSITIES IN INDONESIA	228
	Evi Ekawati, Yetri Martika Sari	
229	IMPLICATIONS OF FINANCIAL LITERATION ON SHARIA BANK FINANCIAL INCLUSION THROUGH SOCIAL NETWORK IN THE INDONESIAN MUSLIM TRADER COMMUNITY (KPMI) EAST JAVA PROVINCE	229
	Djuminah, Puji Nurhayati, Heidy Paramitha Devi	
230	EFFECTIVENESS OF BRAND MANAGEMENT KEY ELEMENTS IN FORMING CONSUMER LOYALTY	230
	Pram Suryanadi, Catur Sugiarto	
231	ENHANCING MARKETING PERFORMANCE THROUGH SMES AGILITY IN THE VOLATILE MARKET: INVESTIGATION IN THE FURNITURE INDUSTRY	231
	Elia Ardyan; Ari Susanti	

232	THE INFLUENCE OF OWNERSHIP STRUCTURE, PRODUCT DIVERSITY, AND PROFITABILITY ON THE FINANCIAL RISK DISCLOSURE IN INDONESIA Ricky Handoko, Sandy Pratomo	232
233	MASS MEDIA: ONE OF THE MAJOR FACTORS IN GLOBALIZATION OF CULTURE TO PRESERVE AND PROMOTE INDONESIAN CULTURE Nurtilek Kadyrov	233
234	INTRODUCING RAINWATER HARVESTING AS A NEW WATER RESOURCE TO THE CITIZEN OF KAMPUNG MOJO, SEMANGGI, SURAKARTA, INDONESIA Mees Sofie Linders, Adiel Edo Atmanto, Aulia Rizky Putri S, Lina Indawati, Charlotte Schmidt	234
235	PARTICIPATORY DESIGN FOR UPCYCLING PLASTICS WASTE - ECOBRICK: A COMMUNITY-BASED SOLUTION FOR SOLID WASTE PROBLEM IN KAMPUNG SEMANGGI (SOLO) Mila Diemel, Shafira Zahro Rosyadi, Nisrina Nurafifah, Pratiwi Anjar Sari, Charlotte Schmidt	235
236	COLLABORATION LEARNING PROCESS TO ACHIEVE COMMUNITY AWARENESS ABOUT GREEN ENVIRONMENT IN KAMPUNG KOTA: UPCYCLING PLASTIC FOR A VERTICAL URBAN AGRICULTURE Linde van Eeden, Nathasya Lintang Ayasha Kirti, Dr. Eng Kusumaningdyah N.H., Charlotte Schmid	236
237	AUDIT OPINION, INTERNAL CONTROL AND CORRUPTION IN PROVINCIAL GOVERNMENTS IN INDONESIA: STUDY OF DIFFERENCES BETWEEN JAVA AND NON JAVA Aris Eddy Sarwono and Dewi Saptantinah PA	237
238	DISCRETIONARY REVENUE AND OWNERSHIP STRUCTURE: THE OPPORTUNISTIC VIEW OF MANAGEMENT Istianingsih	238

Risk-preferences and poverty nexus :
Evidence from indonesia
Muhammad Yusuf Indra Purnama¹, Ariyanto Adhi Nugroho¹

Abstract

This study aims to identify empirically the relationship between poverty and risk preference in Indonesia. We measure the risk preference via Indonesia Family Life Survey 2014 (IFLS5) data. The poor households tend to more risk averse than the other households across income level. Poor people are relatively low educated and mostly come from rural area. This suggest that rural communities and disaster-prone areas should be prioritized to be empowered to move from poverty zones due to its most vulnerability.

Keywords : risk preference, poverty, IFLS4 data

INTRODUCTION

Poor households often find a difficulty to escape the poverty trap, as has noted in several studies (e.g., Dercon, 2009). One of the factors may be the relatively high risk aversion of them. A possible reason of the increasing poverty likelihoods emerge from high risk aversion behavior will have an impact on economic behavior which can have implications for relatively low income which leads to poverty. Being in a vulnerable condition makes people reluctant to accept higher risks considering the potential losses that might arise would endanger their life.

Individual decision-making that tends to avoid risk is allegedly one of the causes of people still in poor condition. This is a lot of concern in economic development, especially if it is associated with preferences. Individuals who extremely avoid financial risk have a tendency to avoid business activities that can threaten their financial condition. Some empirical evidence suggests that poor people tend to have low savings rates (Hubbard *et al*, 1995) and also have low investment in child education planning (Behrman et al, 1998).

In his research using IFLS4 data related to risk preferences in Indonesia, Ng (2013) concluded that women tend to avoid risk more than men. There is also evidence that the more

¹*Faculty of Economics and Business, Universitas Sebelas Maret, Surakarta, Indonesia,*

✉ myipurnama@staff.uns.ac.id

prosperous a person will tend to avoid risk. The higher level of education and the younger the age of the respondents are more patient and risk-averse.

Sanjaya (2013) found that risk-preferences in Indonesia is not only influenced by welfare and demographic factors, but time-preferences also plays an important role as a determinant. The effect of economic shocks and their determining characteristics is not expected to have an impact on people's preferences for risk.

Moreover, most of poverty assessments find a high correlation between education and income status. Education can help a family climb out of poverty directly by increasing household income, through increasing the productivity of self- employed workers, or by enabling access to higher-paid jobs (Iqbal, 2006).

Daniel (1995) and Gray (1997) as cited in Gorman (2010) suggest that marital status difference in earnings contend that married individuals are more productive than unmarried individuals and therefore receive greater rewards. Several studies suggest that married workers indeed engage in greater effort. Married individuals report devoting more effort to their work as on Bielby & Bielby, 1988 (as cited in Gorman, 2010).

Since formal insurance coverage of damages caused by natural disasters is limited, especially in developing countries. Thus, informal insurance mechanisms naturally play a major role as safety nets among the poor in addition to public disaster risk management schemes (Banerjee & Duflo, 2011).

METHODS

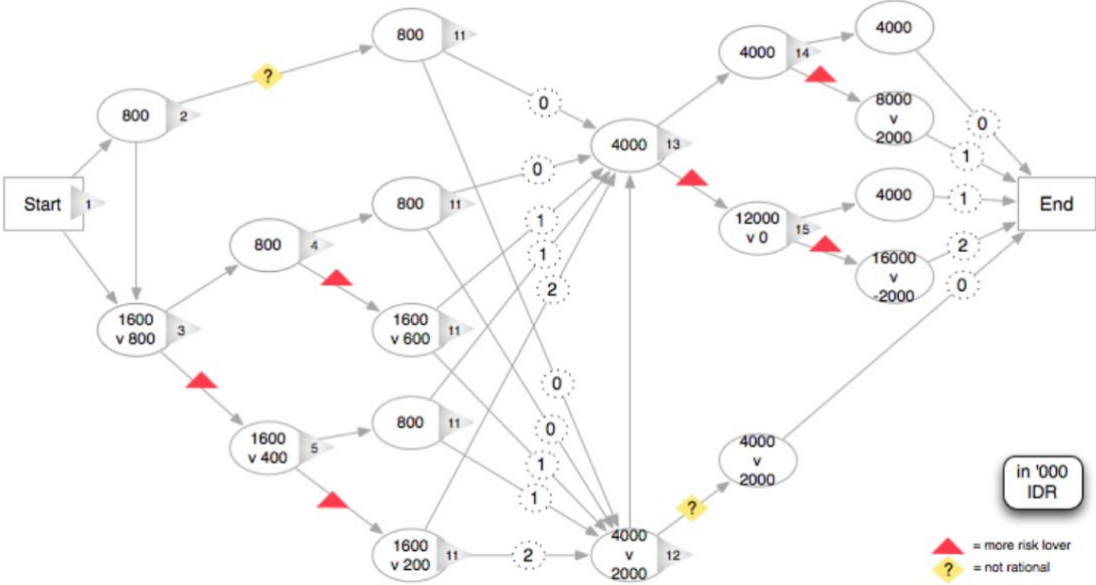
This study uses data from the Indonesian Family Life Survey (IFLS) to assess the relationship between risk-time preferences and poverty. IFLS is a longitudinal survey data that is free of access and is run by RAND in collaboration with Indonesian domestic research institutions. Although respondents only came from 13 provinces in Indonesia, the sample represented 83% of the population of the entire population of Indonesia.

The IFLS was first released in 1993 and continued in 1997, 2000, 2007 and most recently in 2014. Survey instruments related to risk of the IFLS were only conducted in the IFLS4 released

in 2007 and continued in 2014. In general, IFLS consists of two instrument blocks, namely household blocks and community blocks. Household blocks measure the daily lives of individuals and households, such as consumption, welfare, health, education, employment, and so on. While community blocks contain information related to environmental / rural activities such as health and education facilities in an area.

The risk aversion variable is a variable constructed by author which is adopted from Sanjaya (2013). This variable is measured by calculating each possible choice of risk taken in games 1 and 2 in the "risk taking and time" section of the IFLS (see figure 2).

Figure 2. Possible path taken by respondents



Source : adopted from (Sanjaya, 2013)

Each choice is then given a score to be summed and has a range between 0 and 4 which indicates a very risk averse to very risk lover preferences (see table 1).

Table 1. Example of respondents path

Path	Game 1		Game 2		RA = Score 1 + Score 2
	Choice	Score 1	Choice	Score 2	
1	SI01=2; SI03=2; SI05=2	2	SI11=1; SI13=2; SI15=2	2	4
2	SI01=2; SI03=1; SI04=2	1	SI11=1; SI13=2; SI15=1	1	2
3	SI01=1; SI02=2; SI03=2; SI05=1	1	SI11=2; SI12=1	0	1
4	SI01=2; SI03=1; SI04=1	0	SI11=2; SI12=2; SI13=1; SI14=1	0	0
⋮	⋮	⋮	⋮	⋮	⋮

Source: adopted from Sanjaya, 2013.

Note: there is two mistranslations in question SI12: first, “1. Still picks option 1” should be read “1. Still picks option 2”; second, “2. Switches to option 2” should be read “2. Switches to option 1”. Red means that the respondent took the risky choice

Table 2 shows the average value of each variable used in this study. In the lowest income group, which is on the bottom and second quantile (poor group), it appears to have a relatively risk-averse behavior compared to the other groups. The education level of this group is also relatively low when compared to other groups.

In addition, rural areas become the dominant location of the residence of the poor. This phenomenon is in line with the World Bank report (2018) that 61.9% of the poor in Indonesia live in rural areas. In relation to exposure to disasters, the lowest income group also appears to be relatively more often affected by disasters compared to other groups.

Table 2. Descriptive statistic

Variables	Bottom Quantile	Second Quantile	Third Quantile	Fourth Quantile	Fifth Quantile	All sample	
						Mean	SD
Income (in million rupiah)	2,02	5,67	12,5	23,6	42,5	2,98	3,42
Risk averse (0-4, lower more risk averse)	0,80	0,81	0,87	0,96	1,09	0,86	1,05
Education (1-4, higher more educated)	1,76	1,94	2,13	2,45	3,07	2,23	1,13
Rural (=1)	0,52	0,46	0,41	0,31	0,25	0,41	0,49
Disaster (how often)	0,68	0,61	0,63	0,57	0,38	0,61	3,15
Javanese (=1)	0,49	0,46	0,47	0,43	0,39	0,44	0,5
Moslem (=1)	0,9	0,9	0,9	0,89	0,87	0,9	0,3
Age	41,35	39,37	37,85	36,33	38,63	37,16	14,78
Male (=1)	0,39	0,56	0,69	0,7	0,71	0,47	0,5
Married	0,73	0,77	0,8	0,8	0,86	0,73	0,45
Arisan (=1)	0,33	0,32	0,32	0,31	0,39	0,33	0,47
Number of observation	3479	3423	3317	3387	3401	17007	17007

Notes: these are the mean values

To reflect the effect of risk preference on poverty, we estimate the following equation by OLS as below:

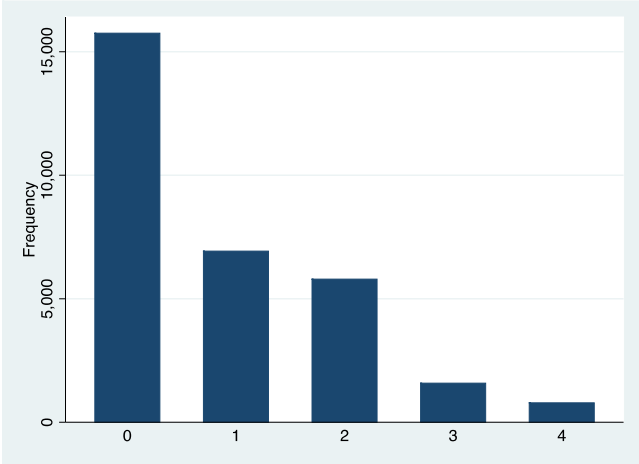
$$\text{Poverty} = f(\text{risk preference, education, other sociodemographic variables, } \textit{expected error})$$

In addition, this study uses an income quantile approach as a proxy of poverty (the lowest quantile represent the poorest groups) in the sample. Total income is the overall income obtained by respondents originating from the main job, which is the most time-consuming work obtained from IFLS-TK section of questionnaire (book 3A).

RESULTS AND DISCUSSION

Figure 1 shows the estimation results related to the frequency distribution of community risk preferences by calculating any possible decision taken by respondents in the risk preferences segment of IFLS5. It can be seen that the majority of the people are still very dominant in risk-averse attitude. This is in accordance with many cases that occur in emerging economies, such as Indonesia.

Figure 1. Risk aversion (RA) frequency distribution *



Source: author estimation based on IFLS5.
Note : *risk aversion values ranging from 0-4, higher value indicates more risk lover

The result form OLS model shows that risk-taking attitude has a positive and significant relationship with income. The more risky choices taken will have a positive impact on income. This is still consistent as in the quantile regression with additional information that there is a likelihood of non-linear relationship between risk preferences across income level.

Meanwhile, the level of education also appears to have a positive effect on income (OLS) and there is a increasing effect across income groups (quantile). The presence of shock factors associated with increasingly repetitive disaster exposures turned out to have a negative impact on income (OLS) and the poor seemed to be most affected, in terms of decreasing income, if they were hit by disaster.

Furthermore, risk aversion on lowest income group has much more stronger effect compare to the OLS model. This means that increasing risk attitude (more risk lover) in the lowest income groups will have a greater positive impact on total income compared to other income groups. The poor attribute that tend to avoid risk are also in line with the relatively low level of their education compared to other income groups.

In addition, people who live in rural areas and the frequency of disasters appear to have a negative and significant effect on income in general. They also bring a relatively more negative negative effect on income received in low-income groups. Arisan which is a form of self insurance looks to have a positive impact on income levels in general and has a relatively greater positive effect on low-income groups. The poor who are statistically concentrated in rural areas are also tend to have low incomes.

Table 4 . OLS and Quantile Regression Result

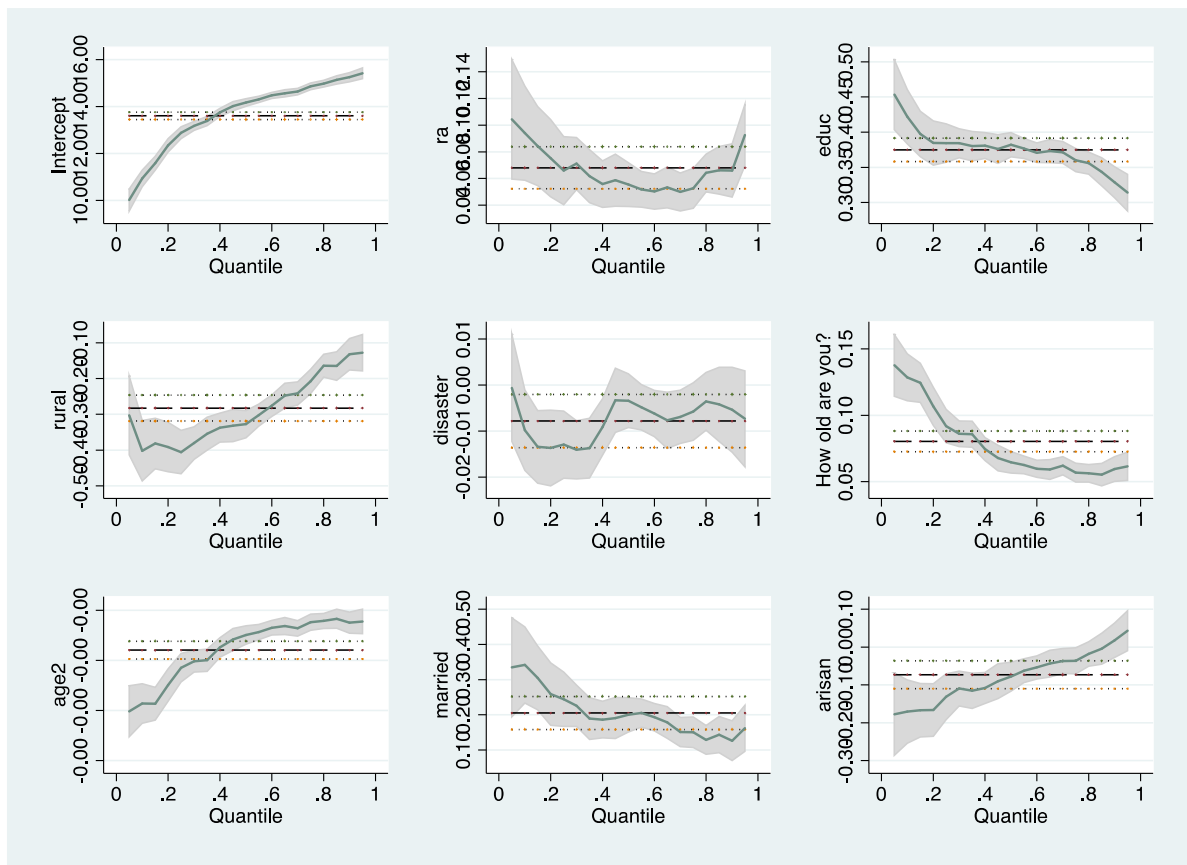
	Quantile Income			
	(1) OLS	(2) Quantile 25	(3) Quantile 50	(4) Quantile 75
Risk aversion (0-4, higher more risk lover)	0.0383*** (0.0084)	0.0441*** (0.0122)	0.0292*** (0.0088)	0.0434*** (0.0082)
Education (1-4, higher more educated)	0.3416*** (0.0118)	0.3383*** (0.0127)	0.3537*** (0.0092)	0.3595*** (0.0086)
Rural (=1)	-0.3393*** (0.0386)	-0.3925*** (0.0276)	-0.3276*** (0.0199)	-0.2180*** (0.0187)
Disaster (how often)	-0.0084** (0.0030)	-0.0160*** (0.0044)	-0.0047 (0.0032)	-0.0057 (0.0030)
Age (years)	0.0784*** (0.0056)	0.0887*** (0.0059)	0.0647*** (0.0043)	0.0554*** (0.0040)
Age ²	-0.0009*** (0.0001)	-0.0010*** (0.0001)	-0.0008*** (0.0000)	-0.0006*** (0.0000)
Married (=1)	0.1109*** (0.0307)	0.1320*** (0.0358)	0.0952*** (0.0258)	0.0918*** (0.0243)
Arisan (=1)	0.1783*** (0.0248)	0.2024*** (0.0299)	0.1362*** (0.0215)	0.0987*** (0.0202)
Constant	13.4638*** (0.1468)	12.5808*** (0.1338)	13.9300*** (0.0963)	14.7253*** (0.0905)
FE	Yes	No	No	No
R-square	0.24			

Chi-square	7.3e+30 (0.0000)*			
Observation	17007	17007	17007	17007

Notes: Standard errors in parentheses * $p < 0.05$, ** $p < 0.01$, *** $p < 0.001$

In order to test the validity of the quantile regression model, a homoskedasticity test was conducted to see the stability of the variance of the variables. It appears that the chi-square value is smaller than 5 percent which indicates heteroscedasticity exist in the OLS model. Thus, the unstable variance can be overcome by the use of quantile regression analysis. Although quantile models can be used as a solution to heteroscedasticity, in Figure 3 it can be seen that only age, sex, and rural variable that are significantly different from OLS are related to the interval of statistical confidence levels.

Figure 3. OLS–Quantile regression confidence interval comparison



Notes : dots lines and solid lines are OLS and quantile regression confidence interval, respectively

CONCLUSIONS

A higher positive effect regarding the increase in risk preferences (more risk lover) in the lowest income group indicates that poor households need to change their risk preferences. The

increase in risk preference certainly needs to be built through improving the quality of education, due to the relatively low level of education in this group.

Government needs to prioritize the empowerment of poor people in rural and disaster-prone areas considering that people who live under this circumstance are more vulnerable. The positive role of self insurance (*Arisan*) should promote the implementation of formal insurance as a

This research also suggest for further research to improve the proxy of poverty with more valid than merely measured by income level. Real per capita expenditure and the value of total asset ownership should be used as a better alternative.

REFERENCE

- Banerjee, A., & Duflo, E. (2011). *Poor economics: A radical thinking of the way to fight global poverty*. New York: Public Affairs
- Behrman, Jere and T.N. Srinivasan,. (1998). *Handbook of Development Economics*, vol. 3. Amsterdam: North-Holland.
- Dercon, S. (2009). Rural poverty: Old challenges in new contexts. *World Bank Research Observer*, 24, 1-28.
- Gloede, O. et al., (2013). Shocks, Individual Risk Attitude, and Vulnerability to Poverty among Rural House- holds in Thailand and Vietnam, *World Development*
- Gorman, Elizabeth, (2000). Marriage and Money The Effect of Marital Status on Attitudes Toward Pay and Finances, *Work and Occupations* 27(1):64-88 .
- Hubbard, R. Glenn, Jonathan Skinner, and Stephen P. Zeldes., (1995). Precautionary Saving and Social Insurance, *Journal of Political Economy*, Volume 103,360-399.
- Iqbal, Farrukh, (2006). *Sustaining Gains in Poverty Reduction and Human Development in the Middle East and North Africa. Orientations in Development*. Washington, DC, Worldbank.
- Ng, James., (2013). *Risk and Time Preferences in Indonesia: The Role of Demographics, Cognition, and Interviewers*, University of Southern Carolina.
- Sanjaya, M. R. (2013). *On the Source of Risk Aversion in Indonesia Using Micro Data 2007*.

Http://Www.Economics-Ejournal.Org, 2013–33, 0–31. Retrieved from <http://www.economics-ejournal.org/economics/discussionpapers/2013-33/file>

Risk-preferences and poverty nexus : Evidence from indonesia

by Muhammad Yusuf Indra Purnama

Submission date: 08-Oct-2020 03:30PM (UTC+0700)

Submission ID: 1408906575

File name: Draft_Jurnal_UIN.docx (563.39K)

Word count: 2140

Character count: 11682

Risk-preferences and poverty nexus :
Evidence from Indonesia
Muhammad Yusuf Indra Purnama¹, Ariyanto Adhi Nugroho¹

Abstract

This study aims to identify empirically the relationship between poverty and risk preference in Indonesia. We measure the risk preference via Indonesia Family Life Survey 2014 (IFLS5) data. The poor households tend to more risk averse than the other households across income level. Poor people are relatively low educated and mostly come from rural area. This suggest that rural communities and disaster-prone areas should be prioritized to be empowered to move from poverty zones due to its most vulnerability.

Keywords : risk preference, poverty, IFLS4 data

INTRODUCTION

Poor households often find a difficulty to escape the poverty trap, as has noted in several studies (e.g., Dercon, 2009). One of the factors may be the relatively high risk aversion of them. A possible reason of the increasing poverty likelihoods emerge from high risk aversion behavior will have an impact on economic behavior which can have implications for relatively low income which leads to poverty. Being in a vulnerable condition makes people reluctant to accept higher risks considering the potential losses that might arise would endanger their life.

Individual decision-making that tends to avoid risk is allegedly one of the causes of people still in poor condition. This is a lot of concern in economic development, especially if it is associated with preferences. Individuals who extremely avoid financial risk have a tendency to avoid business activities that can threaten their financial condition. Some empirical evidence suggests that poor people tend to have low savings rates (Hubbard *et al*, 1995) and also have low investment in child education planning (Behrman *et al*, 1998).

In his research using IFLS4 data related to risk preferences in Indonesia, Ng (2013) concluded that women tend to avoid risk more than men. There is also evidence that the more

¹Faculty of Economics and Business, Universitas Sebelas Maret, Surakarta, Indonesia,

✉ myipurnama@staff.ums.ac.id

prosperous a person will tend to avoid risk. The higher level of education and the younger the age of the respondents are more patient and risk-averse.

Sanjaya (2013) found that risk-preferences in Indonesia is not only influenced by welfare and demographic factors, but time-preferences also plays an important role as a determinant. The effect of economic shocks and their determining characteristics is not expected to have an impact on people's preferences for risk.

Moreover, most of ¹⁷ poverty assessments find a high correlation between education and ⁴ income status. Education can help a family climb out of poverty directly by increasing household income, through increasing the productivity of self-employed workers, or by enabling access to higher-paid jobs (Iqbal, 2006).

Daniel (1995) and Gray (1997) as cited in Gorman (2010) suggest that ² marital status difference in earnings contend that married individuals are more productive than unmarried individuals and therefore receive greater rewards. ² Several studies suggest that married workers indeed engage in greater effort. Married individuals report devoting more effort to their work as on Bielby & Bielby, 1988 (as cited in Gorman, 2010).

³ Since formal insurance coverage of damages caused by natural disasters is limited, especially in developing countries. Thus, informal insurance mechanisms naturally play a major role as safety nets among the poor in addition to public disaster risk management schemes (Banerjee & Duflo, 2011).

METHODS

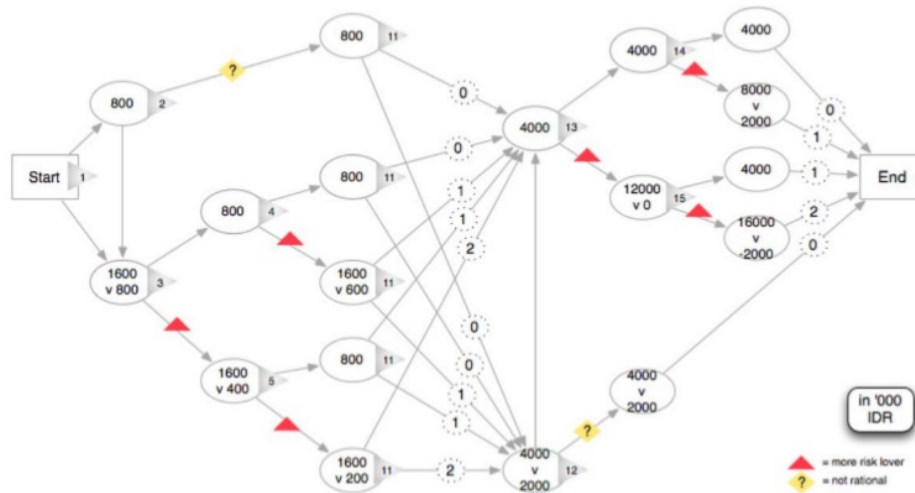
¹⁵ This study uses data from the Indonesian Family Life Survey (IFLS) to assess the relationship between risk-time preferences and poverty. IFLS is a longitudinal survey data that is free of access and is run by RAND in collaboration with Indonesian domestic research institutions. Although respondents only came from 13 provinces in Indonesia, the sample represented 83% of the population of the entire population of Indonesia.

The IFLS was first released in 1993 and continued in 1997, 2000, 2007 and most recently in 2014. Survey instruments related to risk of the IFLS were only conducted in the IFLS4 released

in 2007 and continued in 2014. In general, IFLS consists of two instrument blocks, namely household blocks and community blocks. Household blocks measure the daily lives of individuals and households, such as consumption, welfare, health, education, employment, and so on. While community blocks contain information related to environmental / rural activities such as health and education facilities in an area.

The risk aversion variable is a variable constructed by author which is adopted from Sanjaya (2013). This variable is measured by calculating each possible choice of risk taken in games 1 and 2 in the "risk taking and time" section of the IFLS (see figure 2).

Figure 2. Possible path taken by respondents



Source : adopted from (Sanjaya, 2013)

Each choice is then given a score to be summed and has a range between 0 and 4 which indicates a very risk averse to very risk lover preferences (see table 1).

Table 1. Example of respondents path

Path	Game 1		Game 2		RA = Score 1 + Score 2
	Choice	Score 1	Choice	Score 2	
1	SI01=2; SI03=2; SI05=2	2	SI11=1; SI13=2; SI15=2	2	4
2	SI01=2; SI03=1; SI04=2	1	SI11=1; SI13=2; SI15=1	1	2
3	SI01=1; SI02=2; SI03=2; SI05=1	1	SI11=2; SI12=1	0	1
4	SI01=2; SI03=1; SI04=1	0	SI11=2; SI12=2; SI13=1; SI14=1	0	0
⋮	⋮	⋮	⋮	⋮	⋮

Source: adopted from Sanjaya, 2013.

Note: there is two mistranslations in question SI12: first, “1. Still picks option 1” should be read “1. Still picks option 2”; second, “2. Switches to option 2” should be read “2. Switches to option 1”. Red means that the respondent took the risky choice

Table 2 shows the average value of each variable used in this study. In the lowest income group, which is on the bottom and second quantile (poor group), it appears to have a relatively risk-averse behavior compared to the other groups. The education level of this group is also relatively low when compared to other groups.

In addition, rural areas become the dominant location of the residence of the poor. This phenomenon is in line with the World Bank report (2018) that 61.9% of the poor in Indonesia live in rural areas. In relation to exposure to disasters, the lowest income group also appears to be relatively more often affected by disasters compared to other groups.

Table 2. Descriptive statistic

Variables	Bottom Quantile	Second Quantile	Third Quantile	Fourth Quantile	Fifth Quantile	All sample	
						Mean	SD
Income (in million rupiah)	2,02	5,67	12,5	23,6	42,5	2,98	3,42
Risk averse (0-4, lower more risk averse)	0,80	0,81	0,87	0,96	1,09	0,86	1,05
Education (1-4, higher more educated)	1,76	1,94	2,13	2,45	3,07	2,23	1,13
Rural (=1)	0,52	0,46	0,41	0,31	0,25	0,41	0,49
Disaster (how often)	0,68	0,61	0,63	0,57	0,38	0,61	3,15
Javanese (=1)	0,49	0,46	0,47	0,43	0,39	0,44	0,5
Moslem (=1)	0,9	0,9	0,9	0,89	0,87	0,9	0,3
Age	41,35	39,37	37,85	36,33	38,63	37,16	14,78
Male (=1)	0,39	0,56	0,69	0,7	0,71	0,47	0,5
Married	0,73	0,77	0,8	0,8	0,86	0,73	0,45
Arisan (=1)	0,33	0,32	0,32	0,31	0,39	0,33	0,47
Number of observation	3479	3423	3317	3387	3401	17007	17007

Notes: these are the mean values

To reflect the effect of risk preference on poverty, we estimate the following equation by OLS as below:

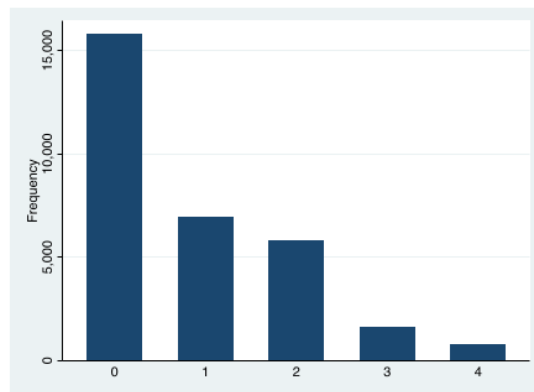
$$\text{Poverty} = f(\text{risk preference, education, other sociodemographic variables, } \textit{expected error})$$

In addition, this study uses an income quantile approach as a proxy of poverty (the lowest quantile represent the poorest groups) in the sample. Total income is the overall income obtained by respondents originating from the main job, which is the most time-consuming work obtained from IFLS-TK section of questionnaire (book 3A).

RESULTS AND DISCUSSION

Figure 1 shows the estimation results related to the frequency distribution of community risk preferences by calculating any possible decision taken by respondents in the risk preferences segment of IFLS5. It can be seen that the majority of the people are still very dominant in risk-averse attitude. This is in accordance with many cases that occur in emerging economies, such as Indonesia.

Figure 1. Risk aversion (RA) frequency distribution *



Source: author estimation based on IFLS5.

Note : *risk aversion values ranging from 0-4, higher value indicates more risk lover

The result from OLS model shows that risk-taking attitude has a positive and significant relationship with income. The more risky choices taken will have a positive impact on income. This is still consistent as in the quantile regression with additional information that there is a likelihood of non-linear relationship between risk preferences across income level.

Meanwhile, the level of education also appears to have a positive effect on income (OLS) and there is a increasing effect across income groups (quantile). The presence of shock factors associated with increasingly repetitive disaster exposures turned out to have a negative impact on income (OLS) and the poor seemed to be most affected, in terms of decreasing income, if they were hit by disaster.

Furthermore, risk aversion on lowest income group has much more stronger effect compare to the OLS model. This means that increasing risk attitude (more risk lover) in the lowest income groups will have a greater positive impact on total income compared to other income groups. The poor attribute that tend to avoid risk are also in line with the relatively low level of their education compared to other income groups.

In addition, people who live in rural areas and the frequency of disasters appear to have a negative and significant effect on income in general. They also bring a relatively more negative effect on income received in low-income groups. Arisan which is a form of self insurance looks to have a positive impact on income levels in general and has a relatively greater positive effect on low-income groups. The poor who are statistically concentrated in rural areas are also tend to have low incomes.

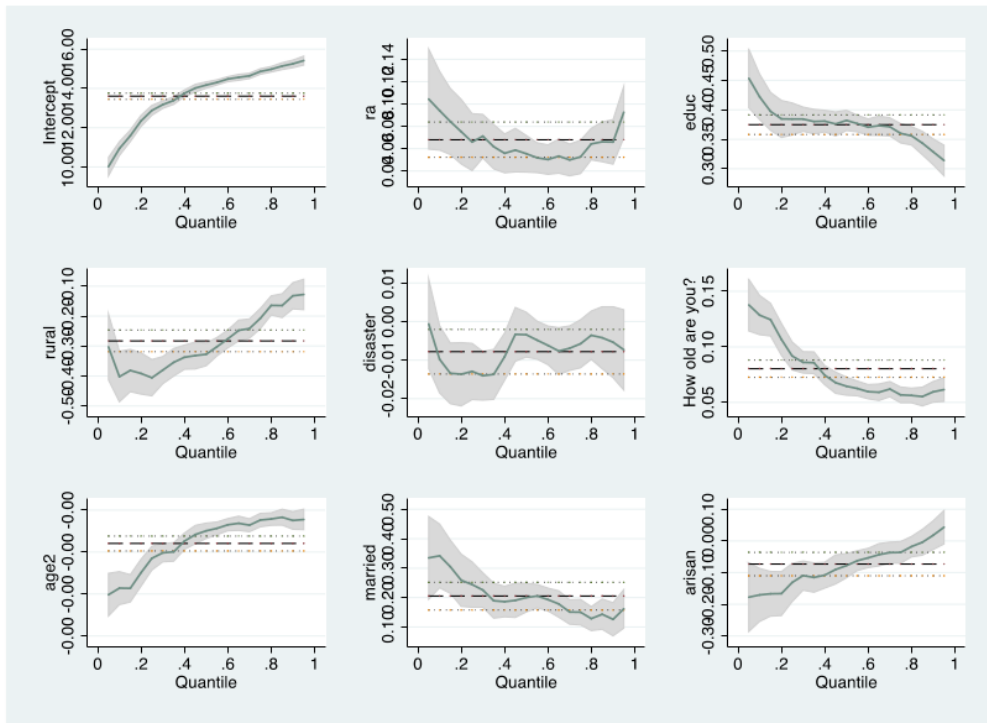
Table 4 . OLS and Quantile Regression Result

	(1) OLS	Quantile Income		
		(2) Quantile 25	(3) Quantile 50	(4) Quantile 75
Risk aversion (0-4, higher more risk lover)	0.0383*** (0.0084)	0.0441*** (0.0122)	0.0292*** (0.0088)	0.0434*** (0.0082)
Education (1-4, higher more educated)	0.3416*** (0.0118)	0.3383*** (0.0127)	0.3537*** (0.0092)	0.3595*** (0.0086)
Rural (=1)	-0.3393*** (0.0386)	-0.3925*** (0.0276)	-0.3276*** (0.0199)	-0.2180*** (0.0187)
Disaster (how often)	-0.0084** (0.0030)	-0.0160*** (0.0044)	-0.0047 (0.0032)	-0.0057 (0.0030)
Age (years)	0.0784*** (0.0056)	0.0887*** (0.0059)	0.0647*** (0.0043)	0.0554*** (0.0040)
Age ²	-0.0009*** (0.0001)	-0.0010*** (0.0001)	-0.0008*** (0.0000)	-0.0006*** (0.0000)
Married (=1)	0.1109*** (0.0307)	0.1320*** (0.0358)	0.0952*** (0.0258)	0.0918*** (0.0243)
Arisan (=1)	0.1783*** (0.0248)	0.2024*** (0.0299)	0.1362*** (0.0215)	0.0987*** (0.0202)
Constant	13.4638*** (0.1468)	12.5808*** (0.1338)	13.9300*** (0.0963)	14.7253*** (0.0905)
FE	Yes	No	No	No
R-square	0.24			

Chi-square	7.3e+30			
	(0.0000)*			
Observations	17007	17007	17007	17007
Notes: Standard errors in parentheses * $p < 0.05$, ** $p < 0.01$, *** $p < 0.001$				

In order to test the validity of the quantile regression model, a homoskedasticity test was conducted to see the stability of the variance of the variables. It appears that the chi-square value is smaller than 5 percent which indicates heteroscedasticity exist in the OLS model. Thus, the unstable variance can be overcome by the use of quantile regression analysis. Although quantile models can be used as a solution to heteroscedasticity, in Figure 3 it can be seen that only age, sex, and rural variable that are significantly different from OLS are related to the interval of statistical confidence levels.

Figure 3. OLS–Quantile regression confidence interval comparison



Notes : dots lines and solid lines are OLS and quantile regression confidence interval, respectively

CONCLUSIONS

A higher positive effect regarding the increase in risk preferences (more risk lover) in the lowest income group indicates that poor households need to change their risk preferences. The

increase in risk preference certainly needs to be built through improving the quality of education, due to the relatively low level of education in this group.

Government needs to prioritize the empowerment of poor people in rural and disaster-prone areas considering that people who live under this circumstance are more vulnerable. The positive role of self insurance (*Arisan*) should promote the implementation of formal insurance as a

This research also suggest for further research to improve the proxy of poverty with more valid than merely measured by income level. Real per capita expenditure and the value of total asset ownership should be used as a better alternative.

REFERENCE

- ⁶ Banerjee, A., & Duflo, E. (2011). *Poor economics: A radical thinking of the way to fight global poverty*. New York: Public Affairs
- ¹⁴ Behrman, Jere and T.N. Srinivasan,. (1998). *Handbook of Development Economics*, vol. 3. Amsterdam: North-Holland.
- ⁸ Dercon, S. (2009). Rural poverty: Old challenges in new contexts. *World Bank Research Observer*, 24, 1-28.
- ¹⁰ Gloede, O. et al., (2013). Shocks, Individual Risk Attitude, and Vulnerability to Poverty among Rural House-holds in Thailand and Vietnam, *World Development*
- ⁵ Gorman, Elizabeth, (2000). Marriage and Money The Effect of Marital Status on Attitudes Toward Pay and Finances, *Work and Occupations* 27(1):64-88 .
- ⁹ Hubbard, R. Glenn, Jonathan Skinner, and Stephen P. Zeldes., (1995). Precautionary Saving and Social Insurance, *Journal of Political Economy*, Volume 103,360-399.
- ⁷ Iqbal, Farrukh, (2006). *Sustaining Gains in Poverty Reduction and Human Development in the Middle East and North Africa*. Orientations in Development. Washington, DC, Worldbank.
- ¹³ Ng, James., (2013). *Risk and Time Preferences in Indonesia: The Role of Demographics, Cognition, and Interviewers*, University of Southern Carolina.
- ¹¹ Sanjaya, M. R. (2013). *On the Source of Risk Aversion in Indonesia Using Micro Data 2007*.

Http://Www.Economics-Ejournal.Org, 2013-33, 0-31. Retrieved from <http://www.economics-ejournal.org/economics/discussionpapers/2013-33/file>

Risk-preferences and poverty nexus : Evidence from indonesia

ORIGINALITY REPORT

17%

SIMILARITY INDEX

%

INTERNET SOURCES

13%

PUBLICATIONS

12%

STUDENT PAPERS

PRIMARY SOURCES

- 1** Submitted to Australian National University
Student Paper 2%
- 2** ELIZABETH H. GORMAN. "Marriage and Money", Work and Occupations, 2016
Publication 2%
- 3** Yasuyuki Sawada, Yoshito Takasaki. "Natural Disaster, Poverty, and Development: An Introduction", World Development, 2017
Publication 2%
- 4** Submitted to The University of the South Pacific
Student Paper 1%
- 5** Submitted to University of Lancaster
Student Paper 1%
- 6** Submitted to University of Warwick
Student Paper 1%
- 7** "Annotated Listing of New Books", Journal of Economic Literature, 2006
Publication 1%

Submitted to University of Nottingham

8

Student Paper

1%

9

Submitted to Excelsior College

Student Paper

1%

10

Katarzyna Cieslik, Olivia D'Aoust. "Risky Business? Rural Entrepreneurship in Subsistence Markets: Evidence from Burundi", The European Journal of Development Research, 2017

Publication

1%

11

Submitted to Erasmus University of Rotterdam

Student Paper

1%

12

Oliver Gloede, Lukas Menkhoff, Hermann Waibel. "Shocks, Individual Risk Attitude, and Vulnerability to Poverty among Rural Households in Thailand and Vietnam", World Development, 2015

Publication

1%

13

Submitted to The University of Manchester

Student Paper

1%

14

Jonathan Morduch. "Income Smoothing and Consumption Smoothing", Journal of Economic Perspectives, 1995

Publication

1%

15

Submitted to 535

Student Paper

1%

16

Submitted to uvt

Student Paper

1%

17

Ahmed Driouchi. "chapter 2 Insights to the Interconnections of Health, Education, and Other Wealth Components", IGI Global, 2013

Publication

<1%

18

Gairuzazmi M. Ghani. "Tourist arrivals to Malaysia from Muslim countries", Tourism Management Perspectives, 2016

Publication

<1%

19

Mayar Sabet. "MORAL OFFSET", Critical Discourse Studies, 2013

Publication

<1%

20

Michael L. Polemis, Achilleas Spais. "Disentangling the drivers of renewable energy investments: The role of behavioral factors", Business Strategy and the Environment, 2020

Publication

<1%

Exclude quotes Off

Exclude matches Off

Exclude bibliography Off